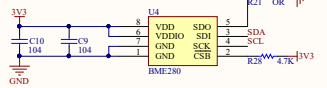
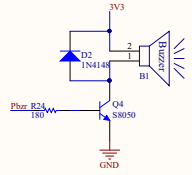


Peripheral 3.3V

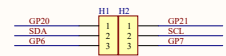
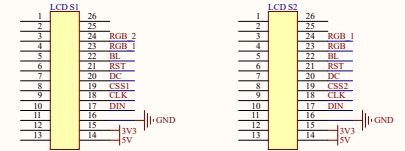
SDO=0 Addr=0X76
SDO=1 Addr=0X77



Atmospheric Pressure
Temperature and humidity

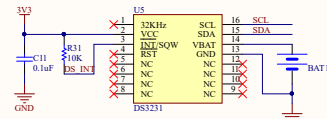


Buzzer

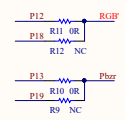


U10	Pin	Label	Pin	Label
1	GP00	VBUS	40	VBUS
2	GP01	VSYS	39	VSYS
3	GND	GND	38	GND
4	CSA1	3V3_EN	37	3V3_EN
5	GP2	3V3	36	3V3(GLE1)
6	GP3	3V3	35	
7	GP4	ADC_VREF	34	
8	GP5	I2C/ADC2	33	GND
9	GND	AGND	32	
10	GP7	I2C/ADC1	31	
11	GP8	I2C/ADC0	30	RUN
12	GP9	GPIO2	29	RGB
13	GND	GND	28	GND
14	CLK	GPIO1	27	GPIO1
15	DIN	GPIO0	26	GP20
16	RST	GND	25	GND
17	BL	GPIO19	24	DS_INT
18	GND	GND	23	GND
19	Phz	GPIO18	22	S_MODE
20	K_R	GPIO17	21	K_L
		GPIO16		

PICO	ESP32-S2
SDA	I2C1_SDA(14)
SCL	I2C1_SCL(15)
GP20/GP6	I2C0_SDA
GP7/GP6	I2C0_SCL
GSA1	2
GSA2	3
GSA3	4
DC	8
CLK	10
DIN	11
RST	12
BL	13
Bzr	14
KR	15
KL	16
KM	17
RGB	22
	24
	25
	26
	27
	28
	29
	30
	31
	32
	33
	34
	35
	36
	37
	38
	39
	40



I2C Address: 0x68



LCD-Nixie-Clock

BCM	wPi	P1	Label	RPI 5V	wPi	BCM
2	8	SDA	SDA1	5V	RPI 5V	
3	9	SCL	SCL1	GND	GND	
4	7	GND	GPIO7	TXD		15 14
17	0	GND	GND	RXD	P18	16 15
22	3	RST	GPIO0	GND	GND	1 18
9	13	DIN	GPIO3	GND	BL	4 23
10	12	CLK	GPIO4	GND	BL	5 24
11	14	GND	GPIO5	GND	GND	6 25
6	22	DX_INT	MISO	GPIO6	DC	10 8
13	23	P13	GPIO22	GPIO26	P17	11 7
19	24	P19	GPIO23	GND	GND	12 15
26	25	E_MODE	GPIO24	GPIO27	CSA1	27 16
		GND	GPIO25	GPIO28	CSA1	28 20
		GND	GPIO26	GPIO29	CSA2	29 21

RPI GPIO

