

### Step 1

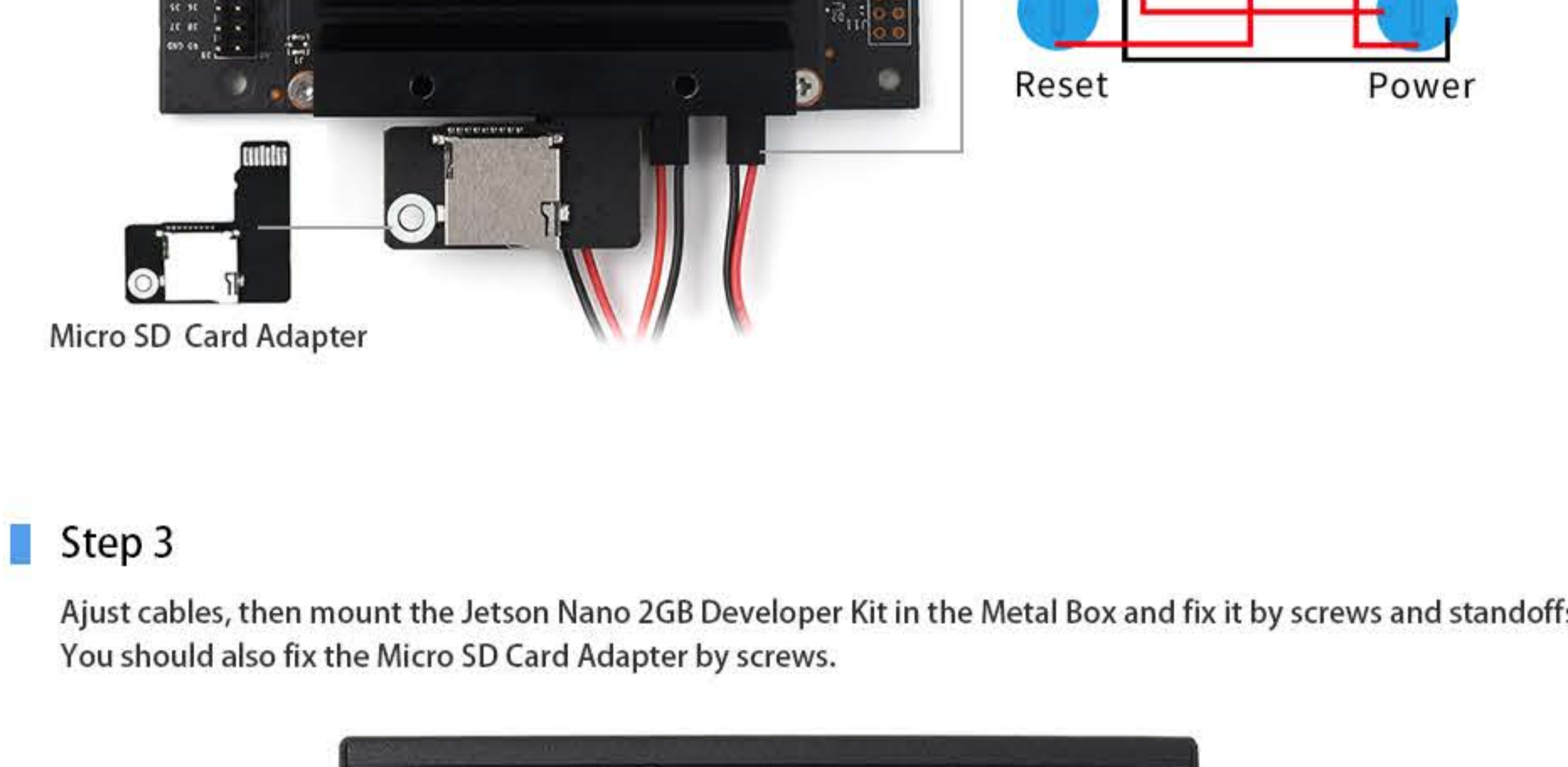
Mount the buttons on the Metal Box, note that the button with four wires is the Power button and the other which has two wires are the Reset button.



### Step 2

Connect buttons to Jetson Nano. Please refer to the diagram below. Insert the Micro SD Adapter to the Micro SD card slot. Press it to let it locked.

**Note:** You should press the adapter to make sure that the adapter is pop-up, then remove it. You cannot directly pull it out, otherwise you will break the Micro SD card slot.



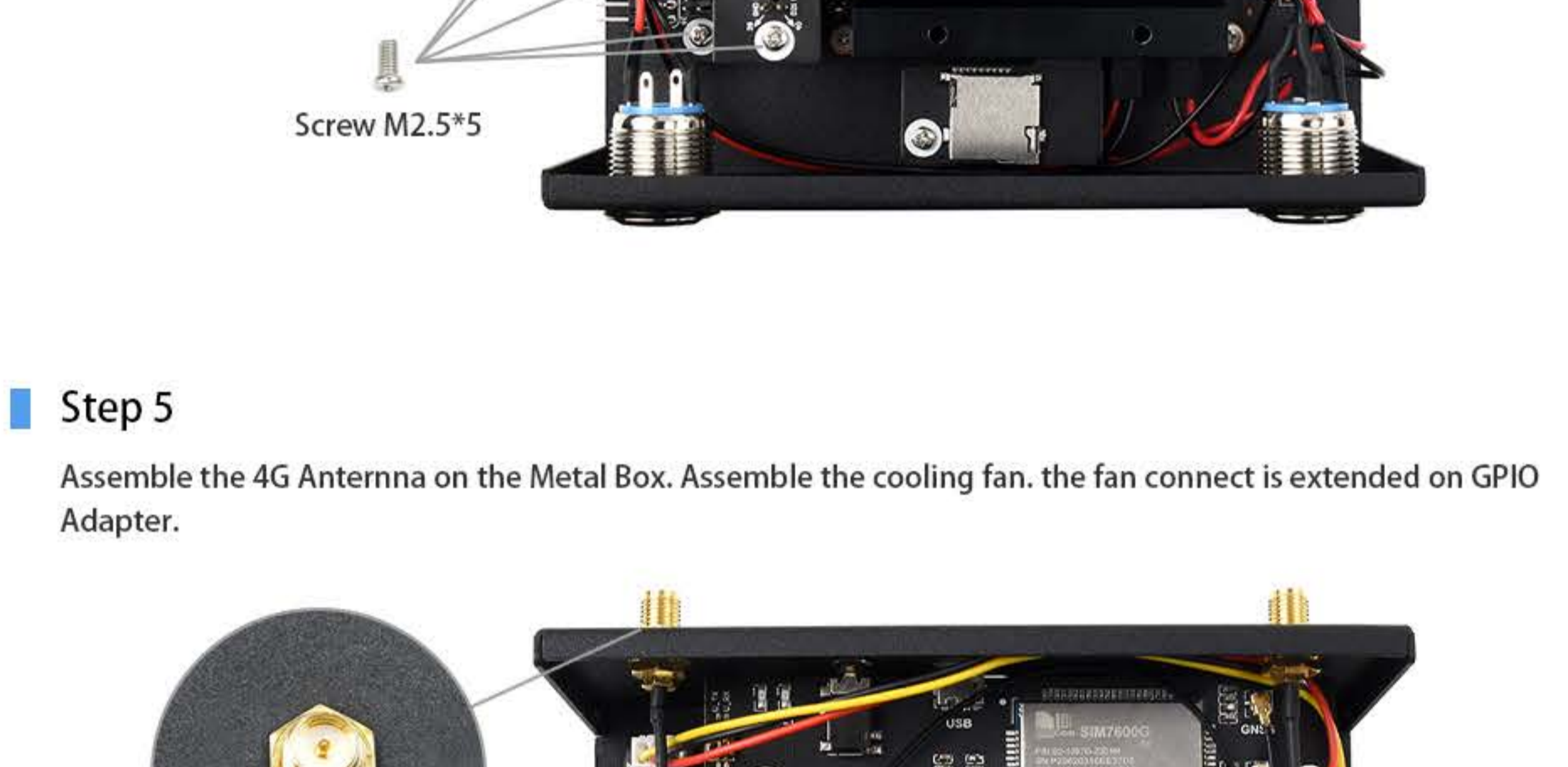
### Step 3

Adjust cables, then mount the Jetson Nano 2GB Developer Kit in the Metal Box and fix it by screws and standoffs. You should also fix the Micro SD Card Adapter by screws.



### Step 4

Mount the GPIO Adapter in Metal Box by screws. Then insert the SIM7600G-H 4G for Jetson Nano Board to the Jetson Nano and fix it by screws.



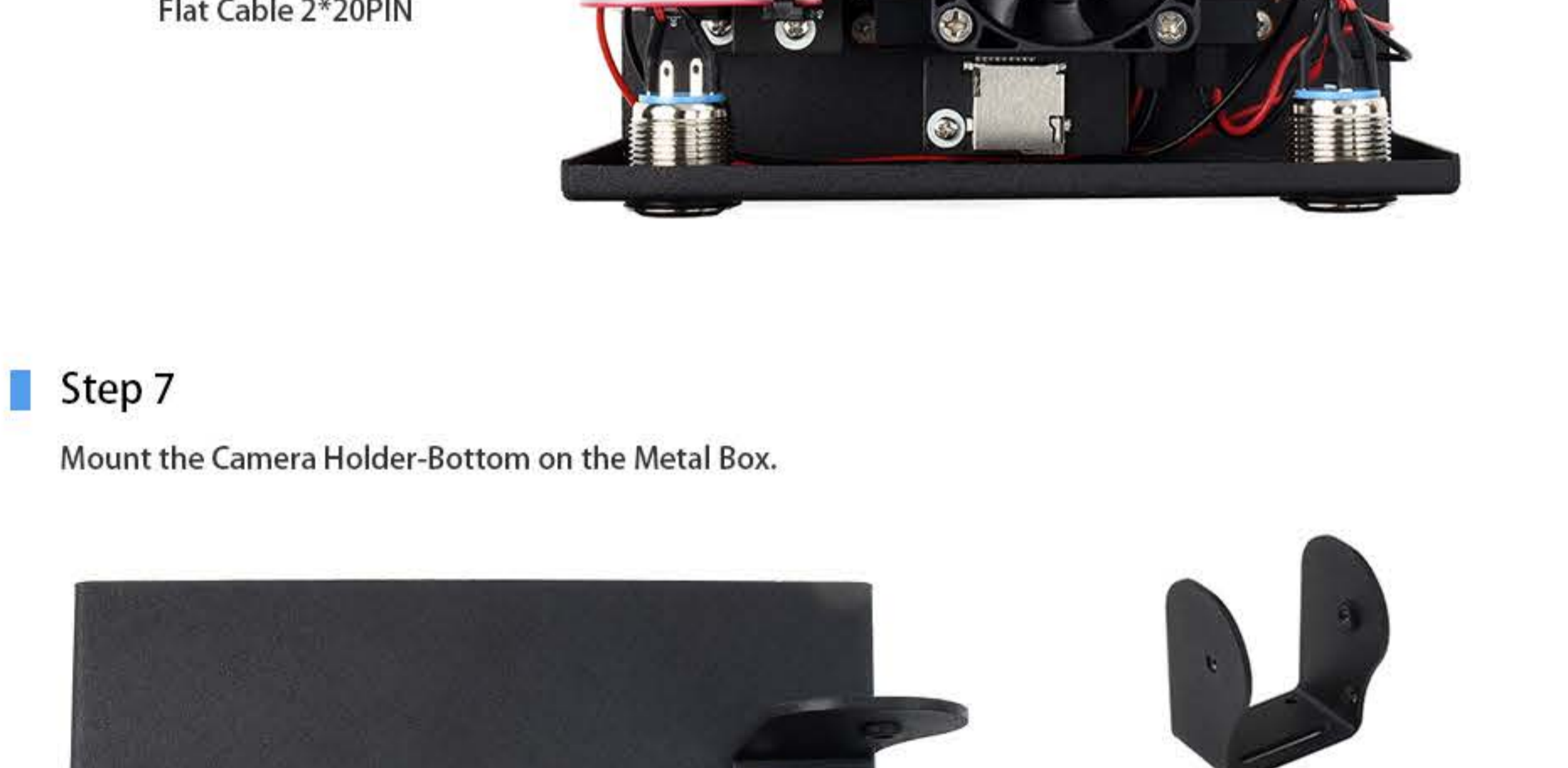
### Step 5

Assemble the 4G Antenna on the Metal Box. Assemble the cooling fan, the fan connect is extended on GPIO Adapter.



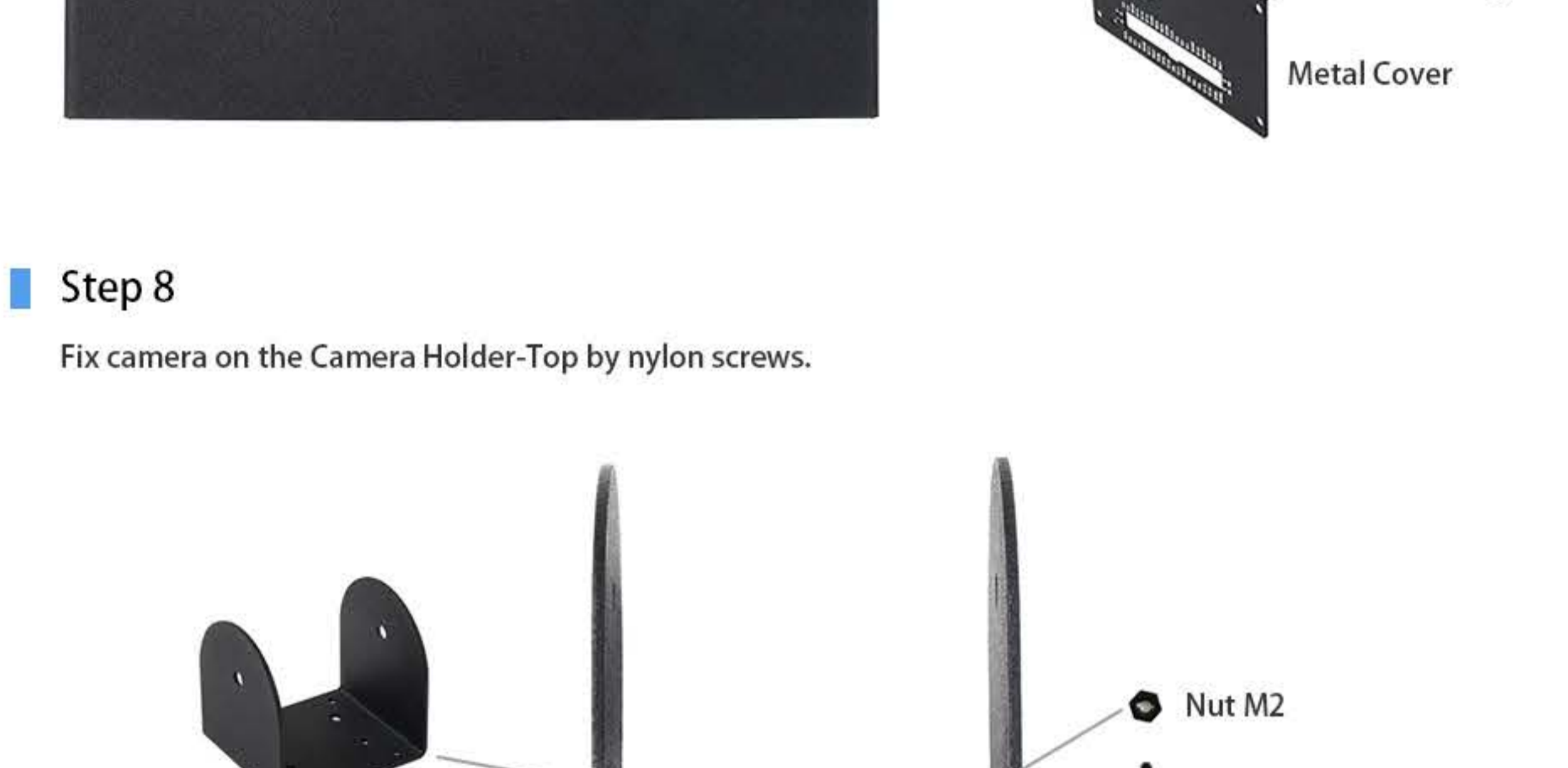
### Step 6

Connect the Jetson Nano to GPIO Adapter by flat cable.



### Step 7

Mount the Camera Holder-Bottom on the Metal Box.



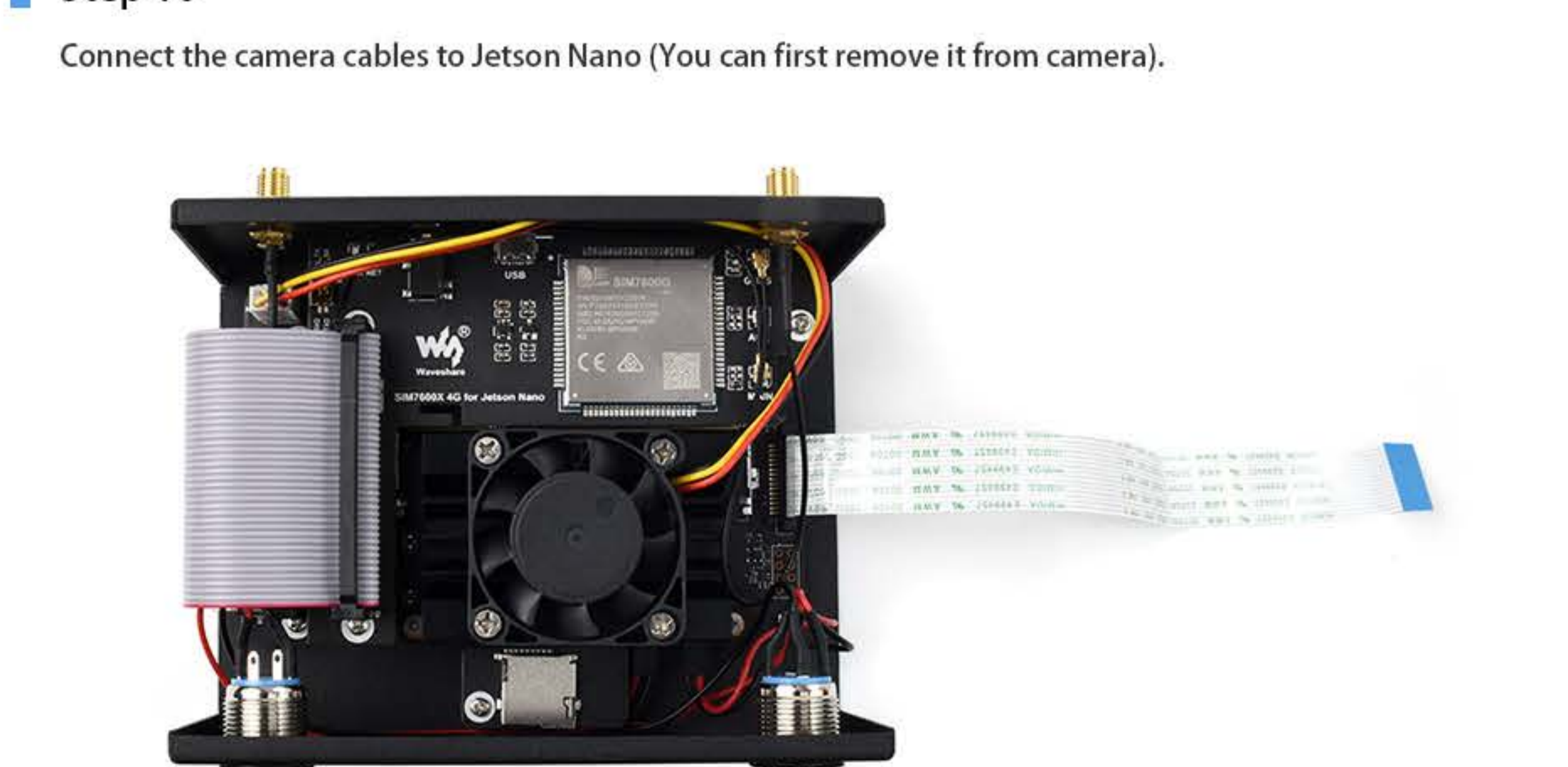
### Step 8

Fix camera on the Camera Holder-Top by nylon screws.



### Step 9

Assemble the camera holders by screws, adjust the angle and then screw it tightly.



### Step 10

Connect the camera cables to Jetson Nano (You can first remove it from camera).



### Step 11

Assemble the Case, connect the Camera and the antennas

