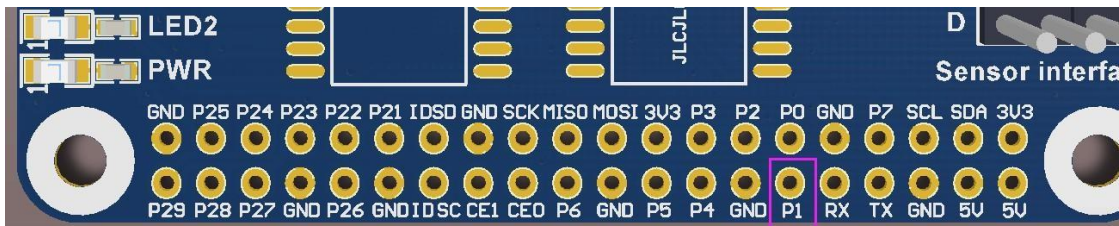


Raspberry Pi LCD PWM Backlight Control

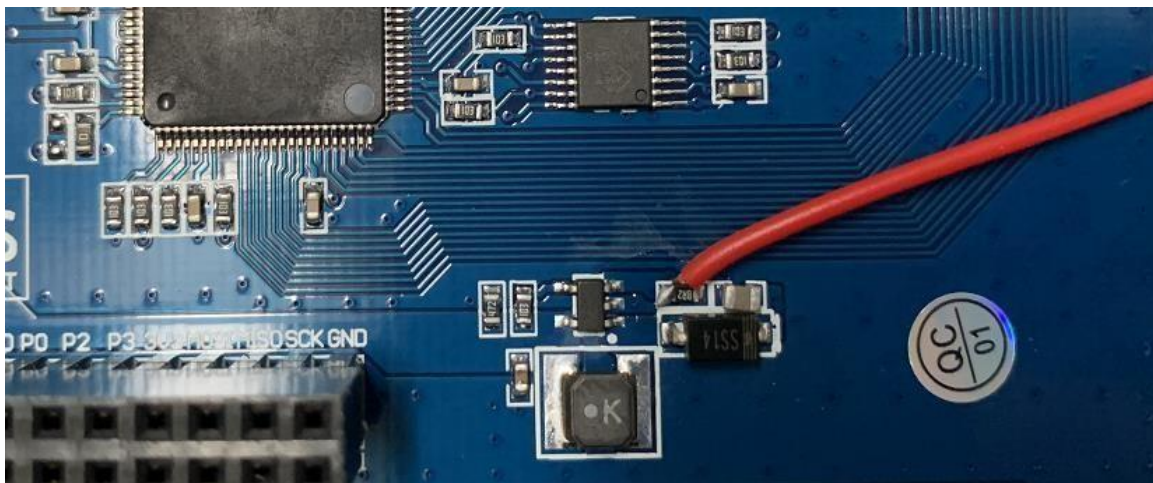
1. CONTROL PIN

P1 interface is the control pin for Raspberry Pi.



4inch HDMI LCD

As shown below, connect the following pads to the P1 pin of the Raspberry Pi.



Run the following demand in the terminal of Raspberry Pi:

```
gpio -g pwm 18 0
```

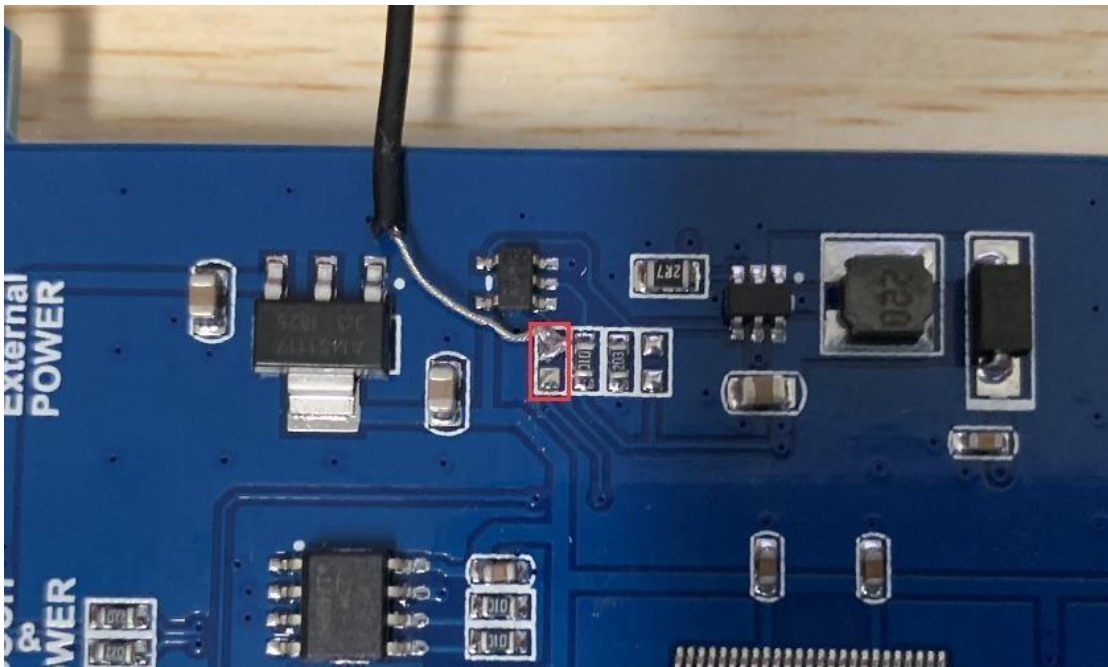
```
gpio -g mode 18 pwm (the occupied pins are PWM pins)
```

```
gpio pwmc 1000
```

Brightness control: `gpio -g pwm 18 X` (X value is between 0~1024), 0 is the brightest, 1024 is the darkest.

5inch HDMI LCD (B)

As shown below, remove the OR and then connect the pad to the P1 of Raspberry Pi.



Run the following demand in the terminal of Raspberry Pi

```
gpio -g pwm 18 1024
gpio -g mode 18 pwm (the occupied pin is PWM)
gpio pwmc 1000
Brightness control: gpio -g pwm 18 X (X value is between 0~1024)
```

5inch HDMI LCD (G) \ 5inch HDMI LCD (H)

As shown below, remove the 0R and then connect the pad to the P1 of Raspberry Pi.

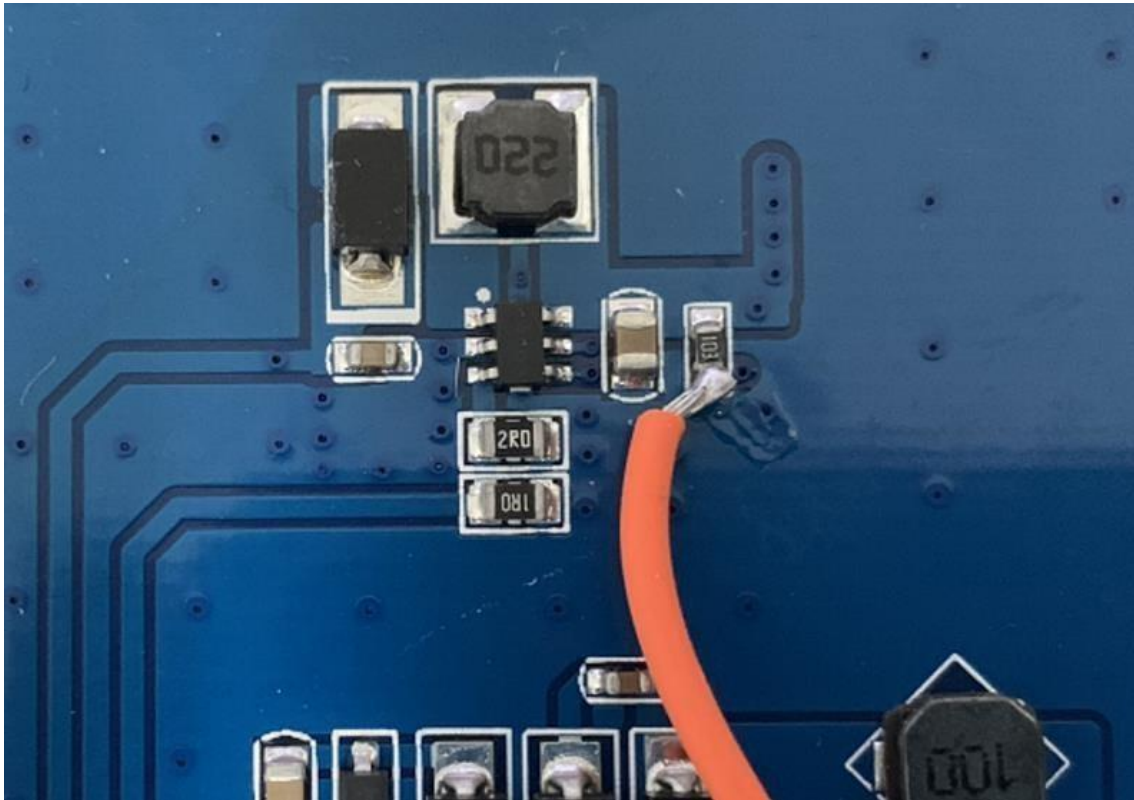


Run the following demand in the terminal of Raspberry Pi:

```
gpio -g pwm 18 1024  
gpio -g mode 18 pwm (the occupied pin is PWM)  
gpio pwm 1000  
Brightness control: gpio -g pwm 18 X (X value is between 0~1024)
```

7inch HDMI LCD (B)

As shown below, connect the pad to the P1 of Raspberry Pi:

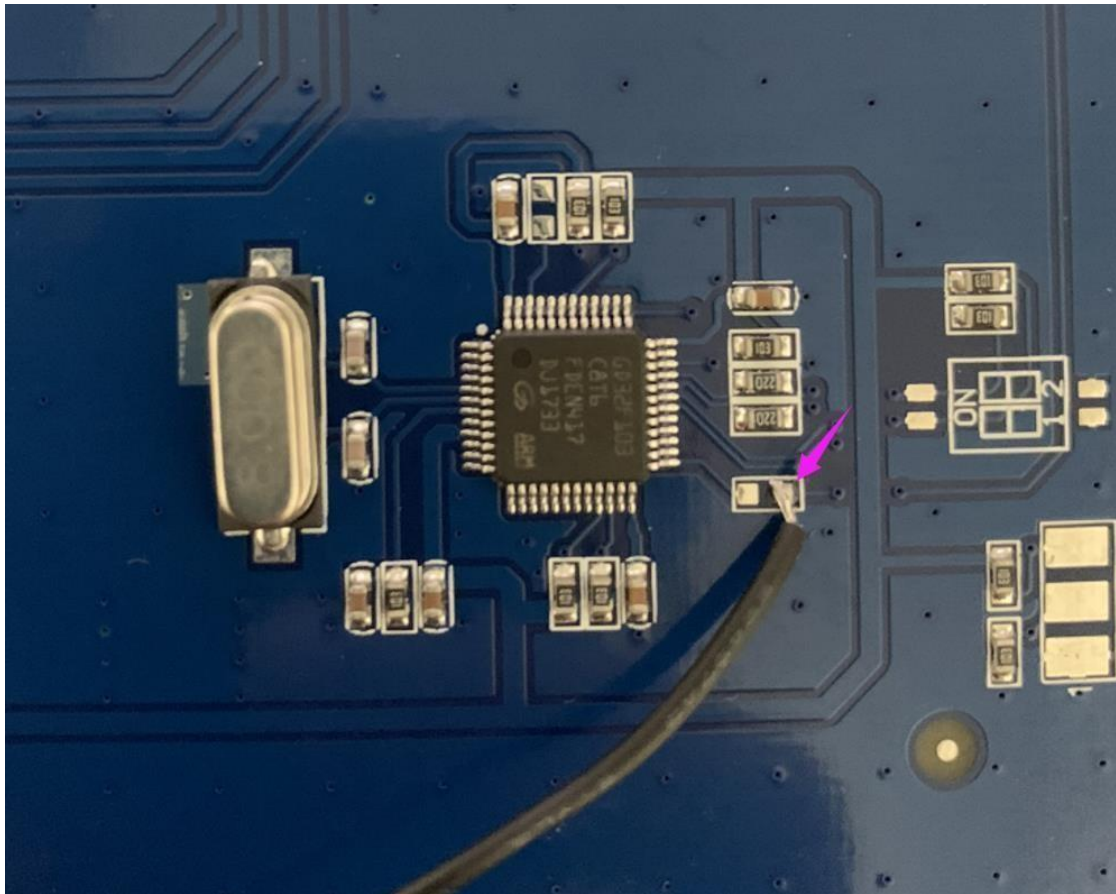


Run the following commands in the terminal of Raspberry Pi:

```
gpio -g pwm 18 1024  
gpio -g mode 18 pwm (the occupied pin is PWM)  
gpio pwm 1000  
Brightness control: gpio -g pwm 18 X (X value is between 0~1024)
```


7inch HDMI LCD (C) Rev2.2

As shown below, remove the 0R and then connect the pad to the P1 of Raspberry Pi.

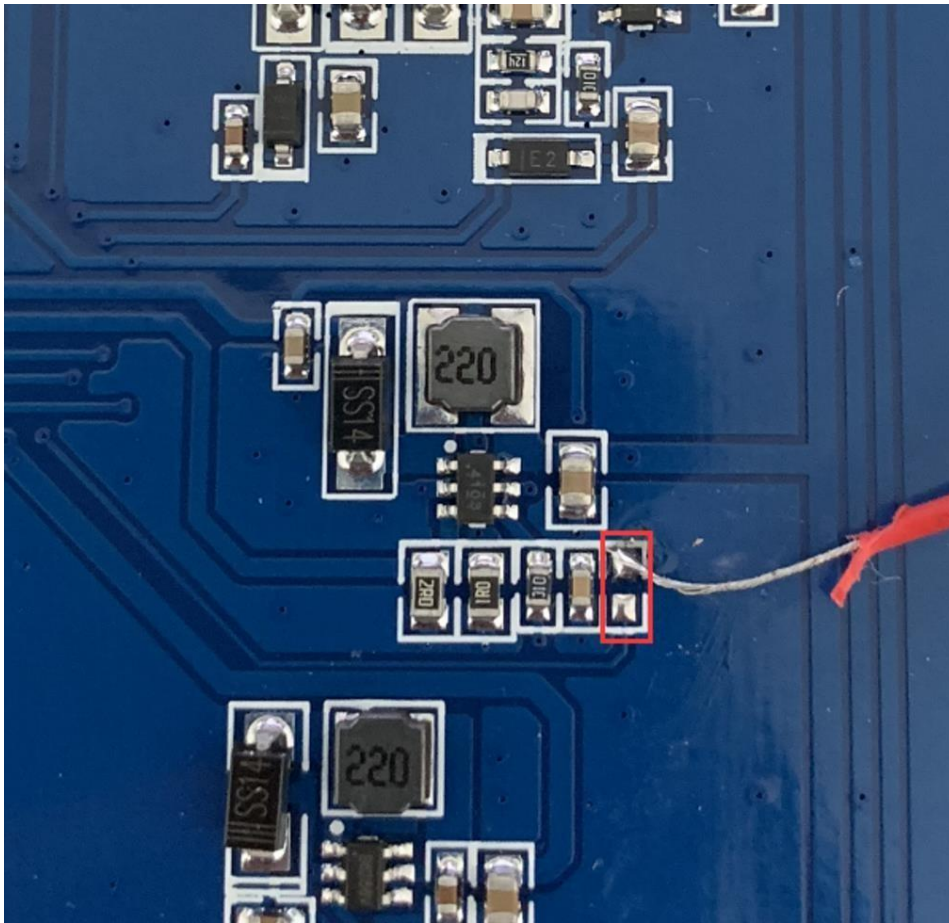


Run the following commands in the terminal of Raspberry Pi:

```
gpio -g pwm 18 1024  
  
gpio -g mode 18 pwm (the occupied pin is PWM)  
  
gpio pwmc 1000  
  
Brightness control: gpio -g pwm 18 X (X value is between 400~500)
```

7inch HDMI LCD (H)

As shown below, remove the 22R and then connect the pad to the P1 of Raspberry Pi.

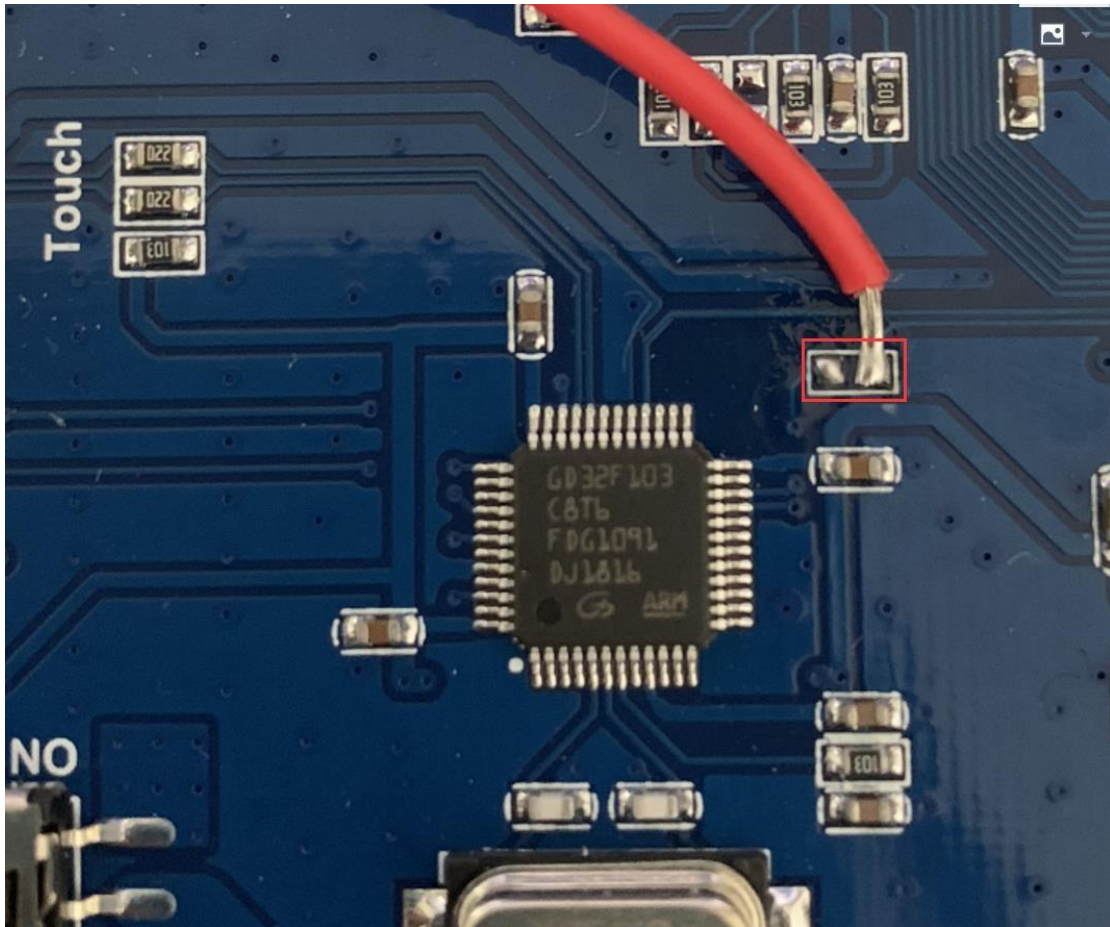


Run the following demands in the terminal of Raspberry Pi:

```
gpio -g pwm 18 1024  
gpio -g mode 18 pwm (the occupied pin is PWM)  
gpio pwm 1000  
Brightness control: gpio -g pwm 18 X (X value is between 0~1024)
```

10.1inch HDMI LCD (B)

As shown below, remove the 0R and then connect the pad to the P1 of Raspberry Pi.



Run the following demands in the terminal of Raspberry Pi:

```
gpio -g pwm 18 1024  
  
gpio -g mode 18 pwm (the occupied pin  
is PWM)gpio pwmc 1000  
  
Brightness control: gpio -g pwm 18 X (X value is between 0~1024)
```