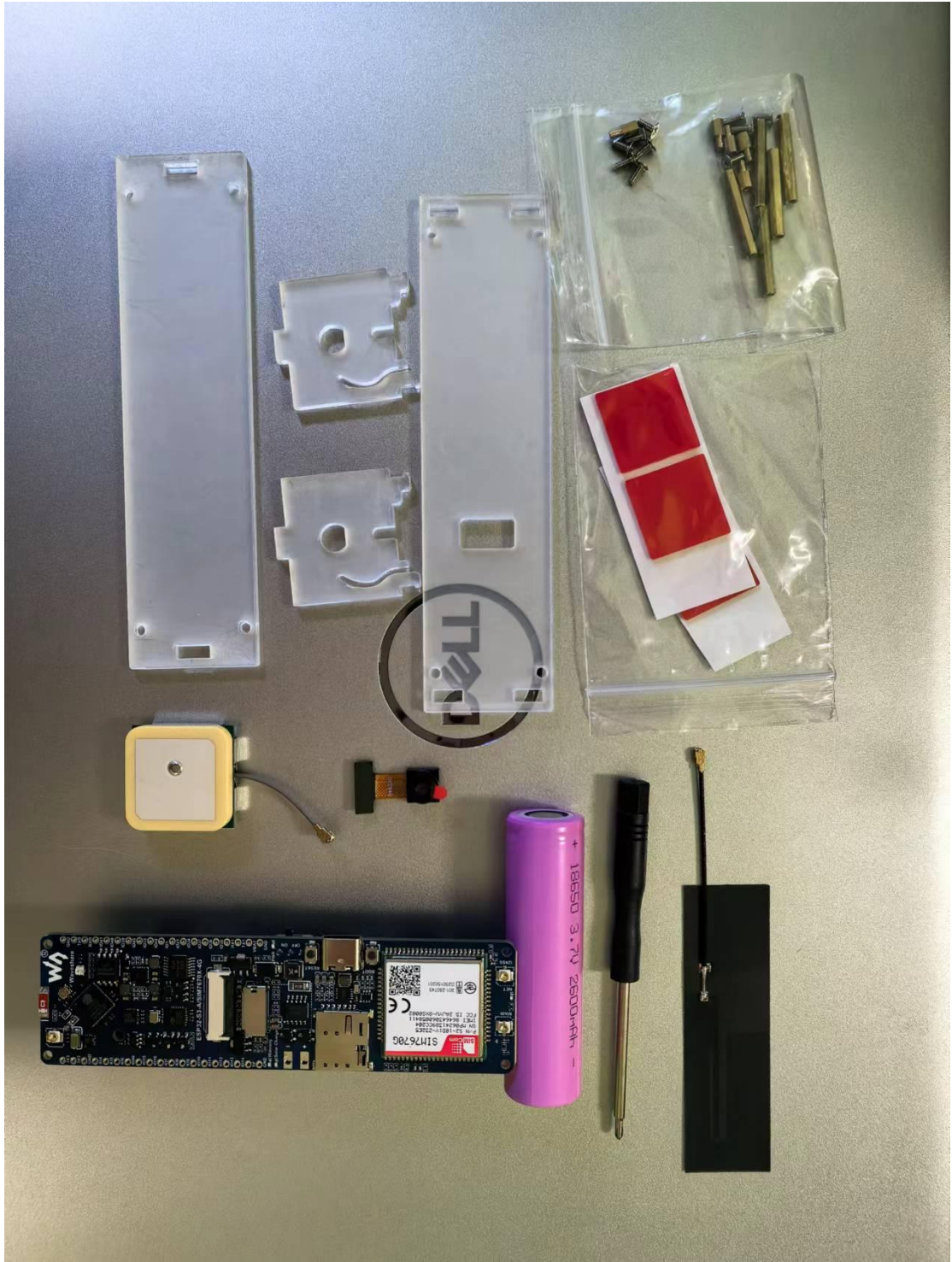


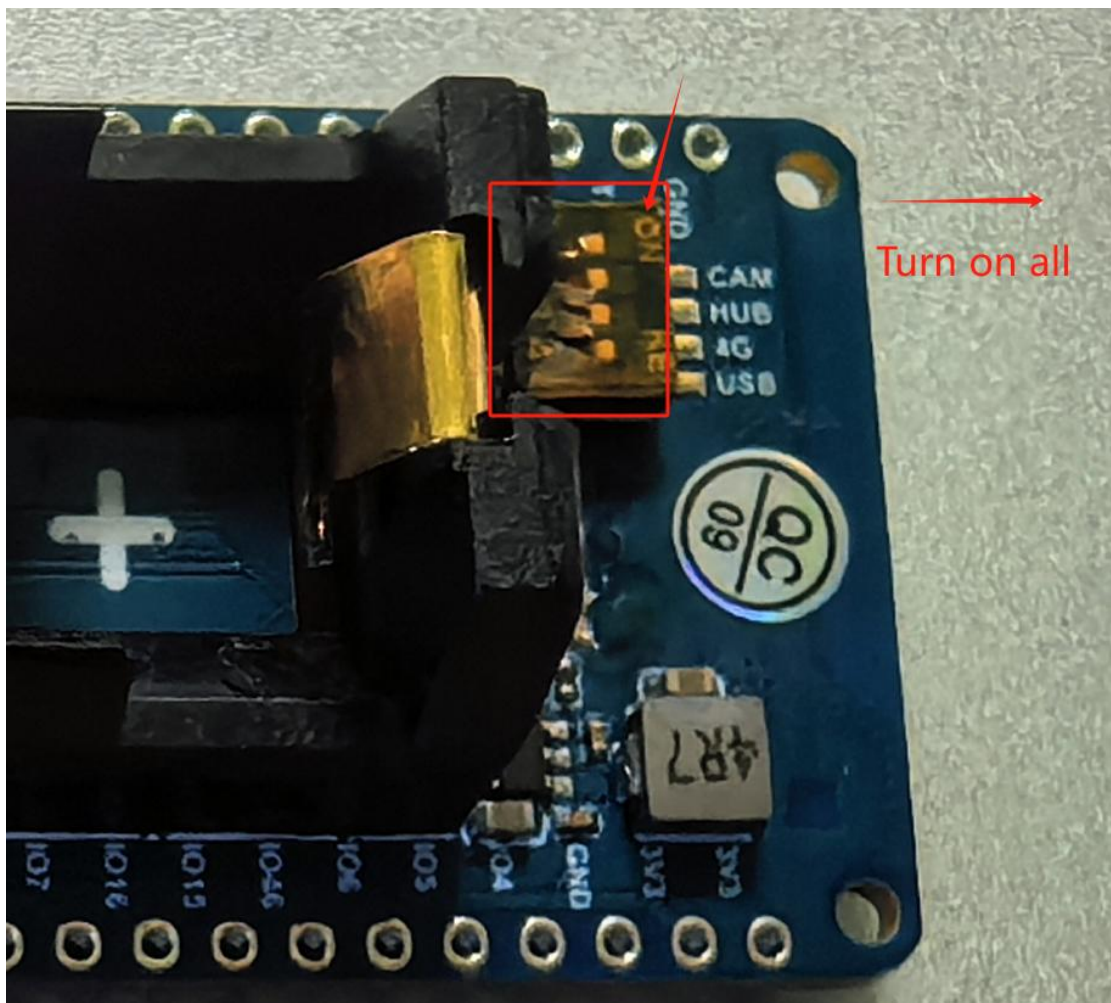
准备相关硬件



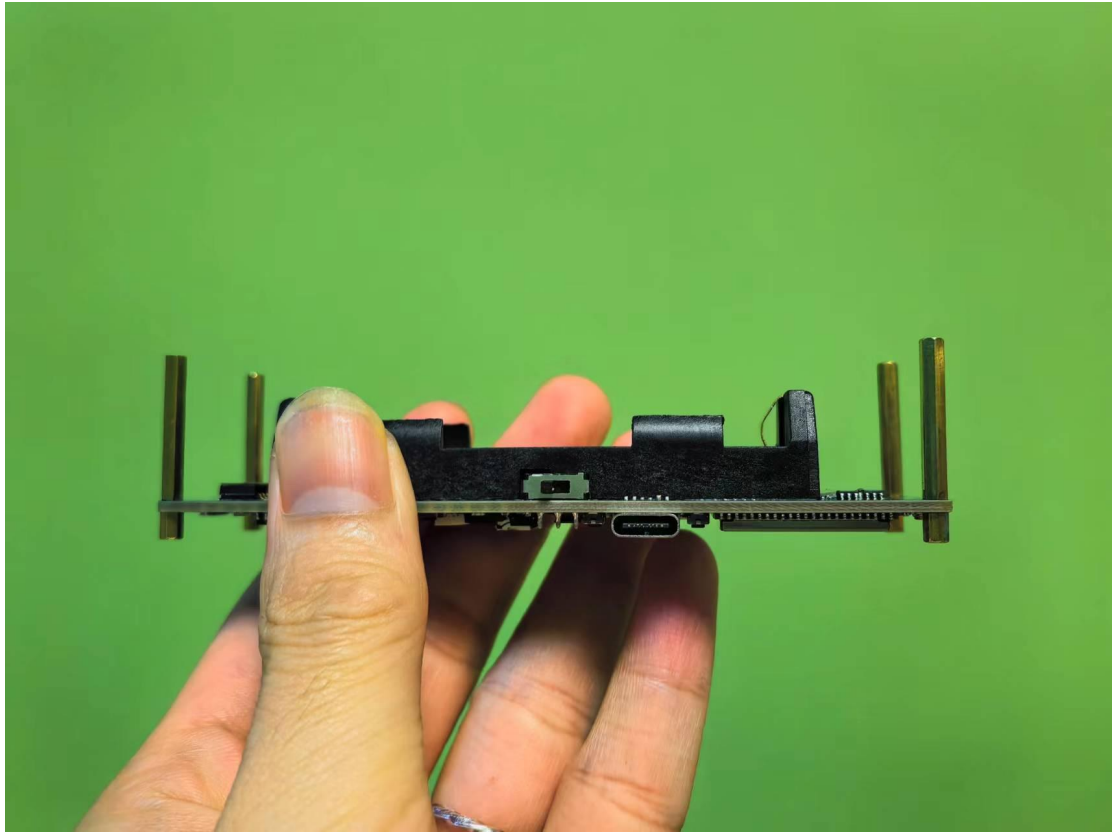
4G 贴片天线贴在底板上



将 4 个拨码开关都置于 ON (拨到靠板边丝印的一侧)



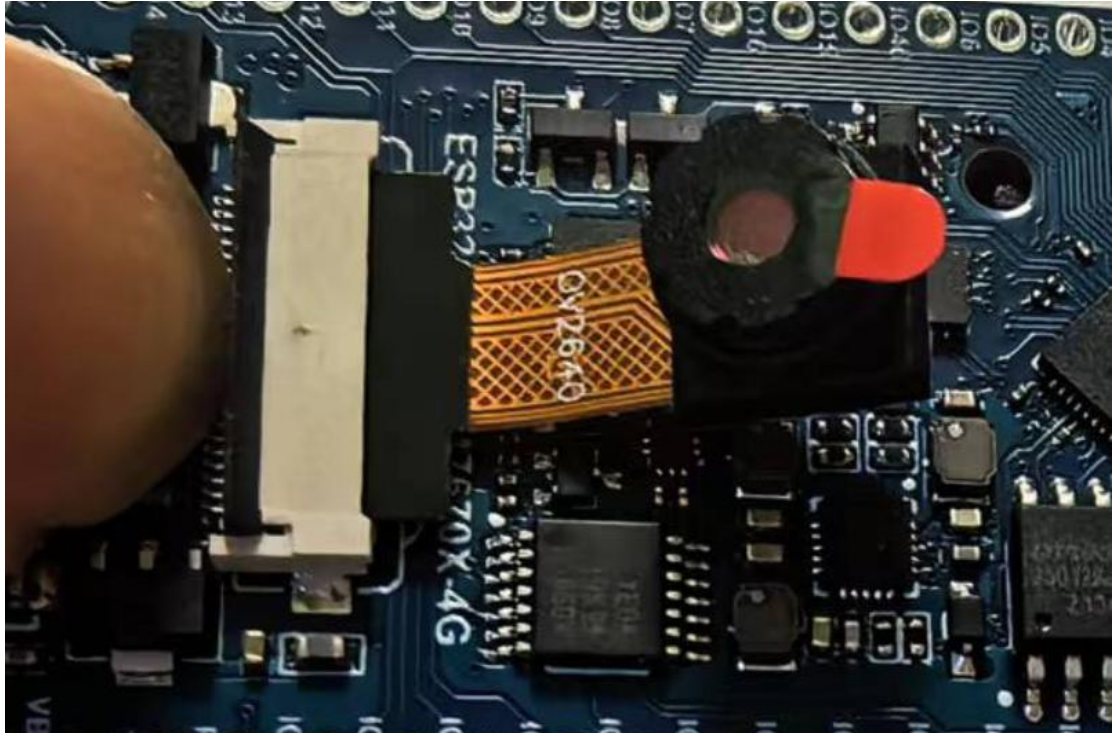
把螺柱固定在主机 PCBA 上



对准正负极装好电池



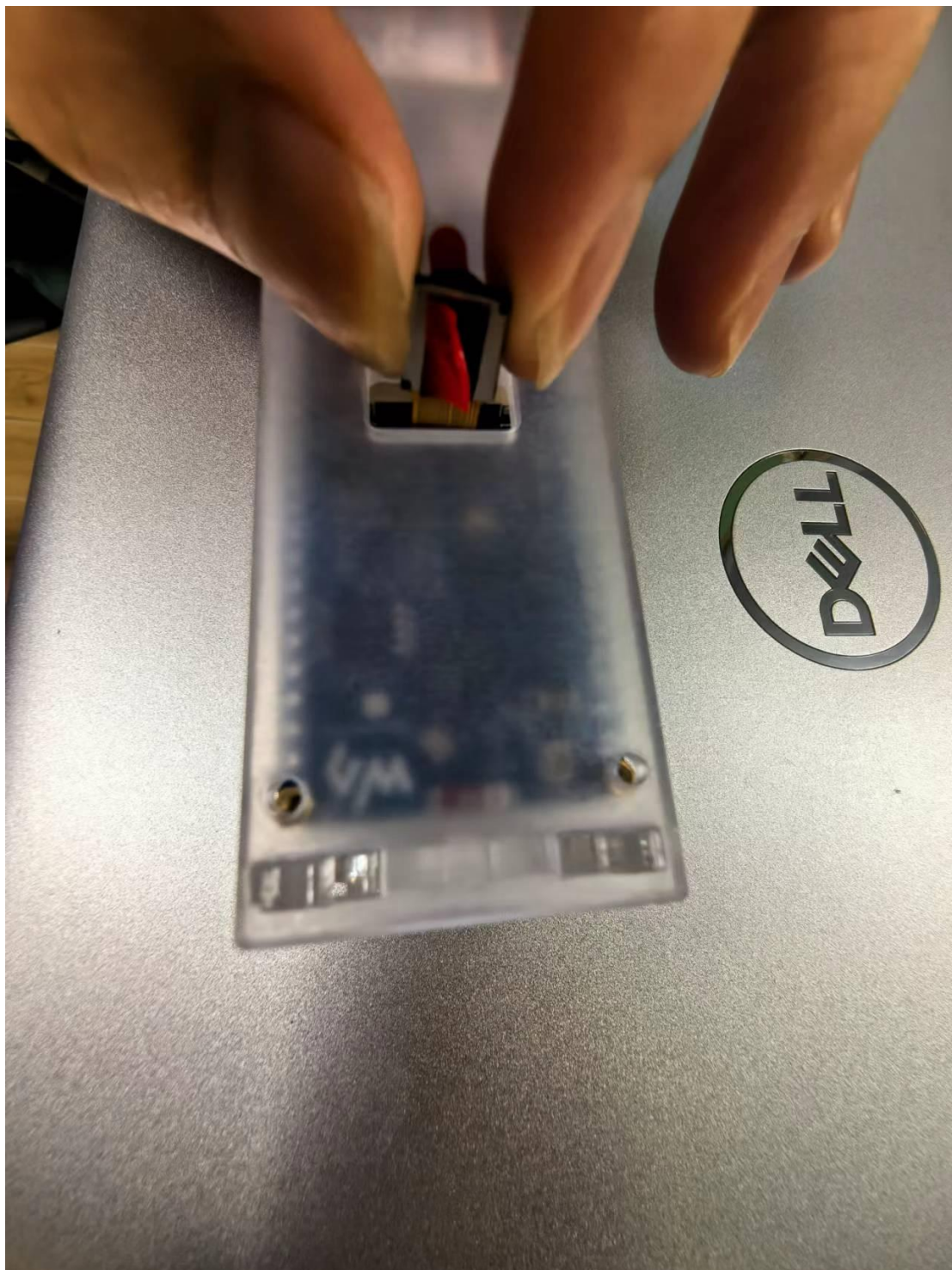
安装摄像头



接好天线，安装 SIM 卡，装上底盖和侧边盖



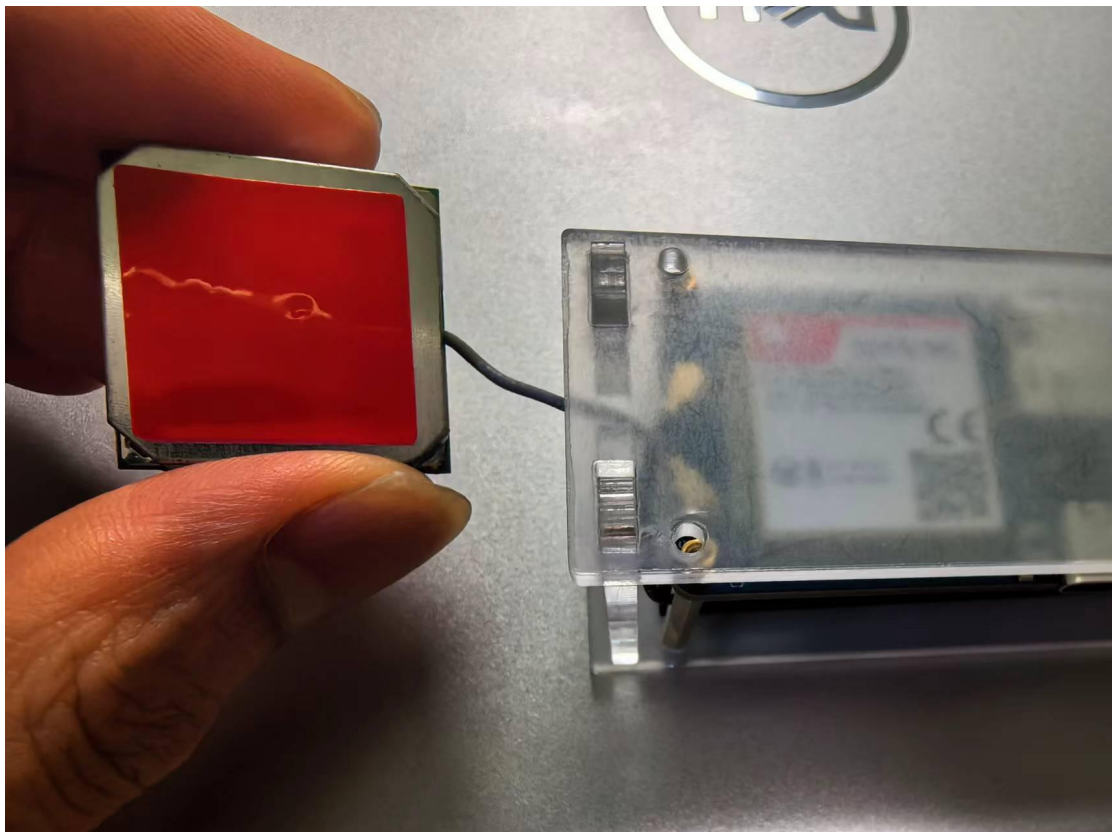
装上上盖，伸出摄像头



贴合摄像头



贴合定位天线



组装完成

