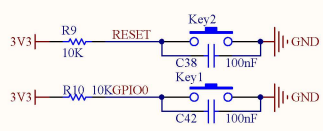
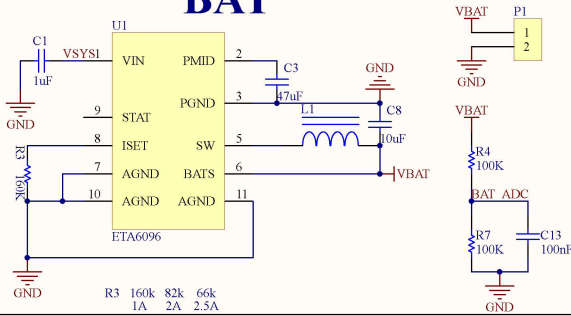


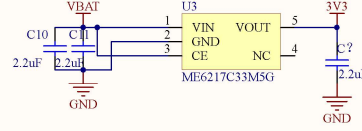
KEY



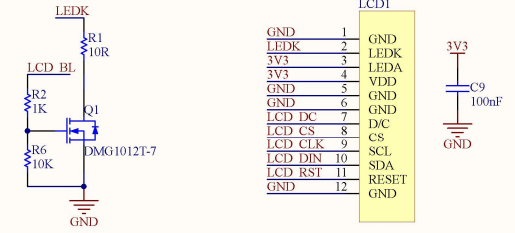
BAT



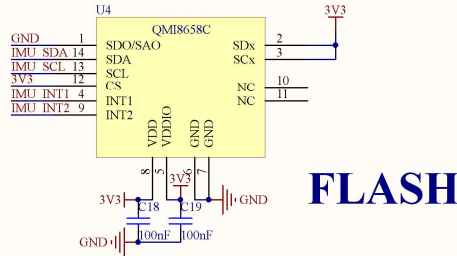
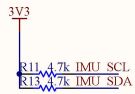
POWER



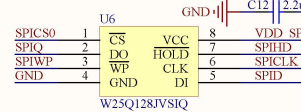
LCD



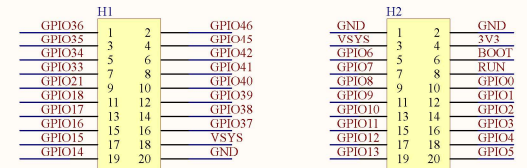
IMU



FLASH



GPIO_OUT



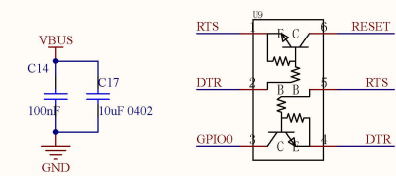
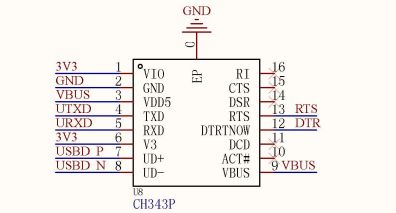
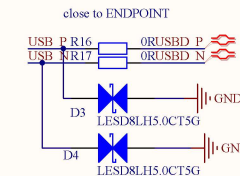
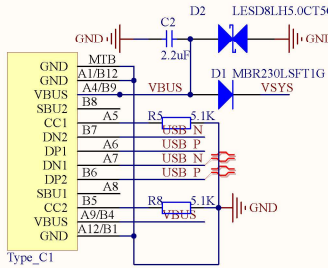
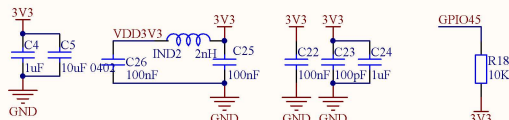
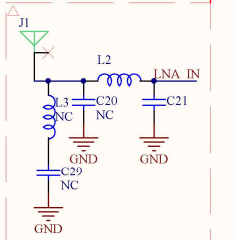
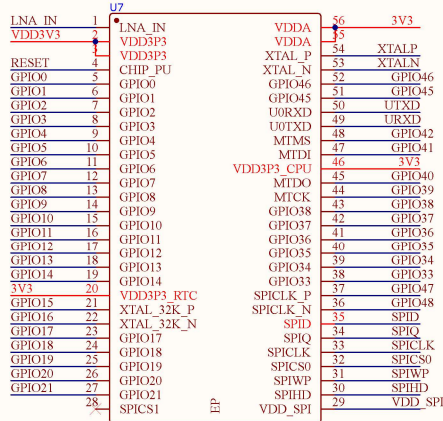
IMU SDA	GPIO6
IMU SCL	GPIO7

IMU INT1	GPIO47
IMU INT2	GPIO48

LCD DC	GPIO8
LCD CS	GPIO9
LCD CLK	GPIO10
LCD DIN	GPIO11

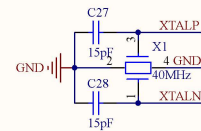
LCD RST	GPIO12
LCD BL	GPIO40

BAT_ADC	GPIO1
BOOT	GPIO0
RUN	RESET



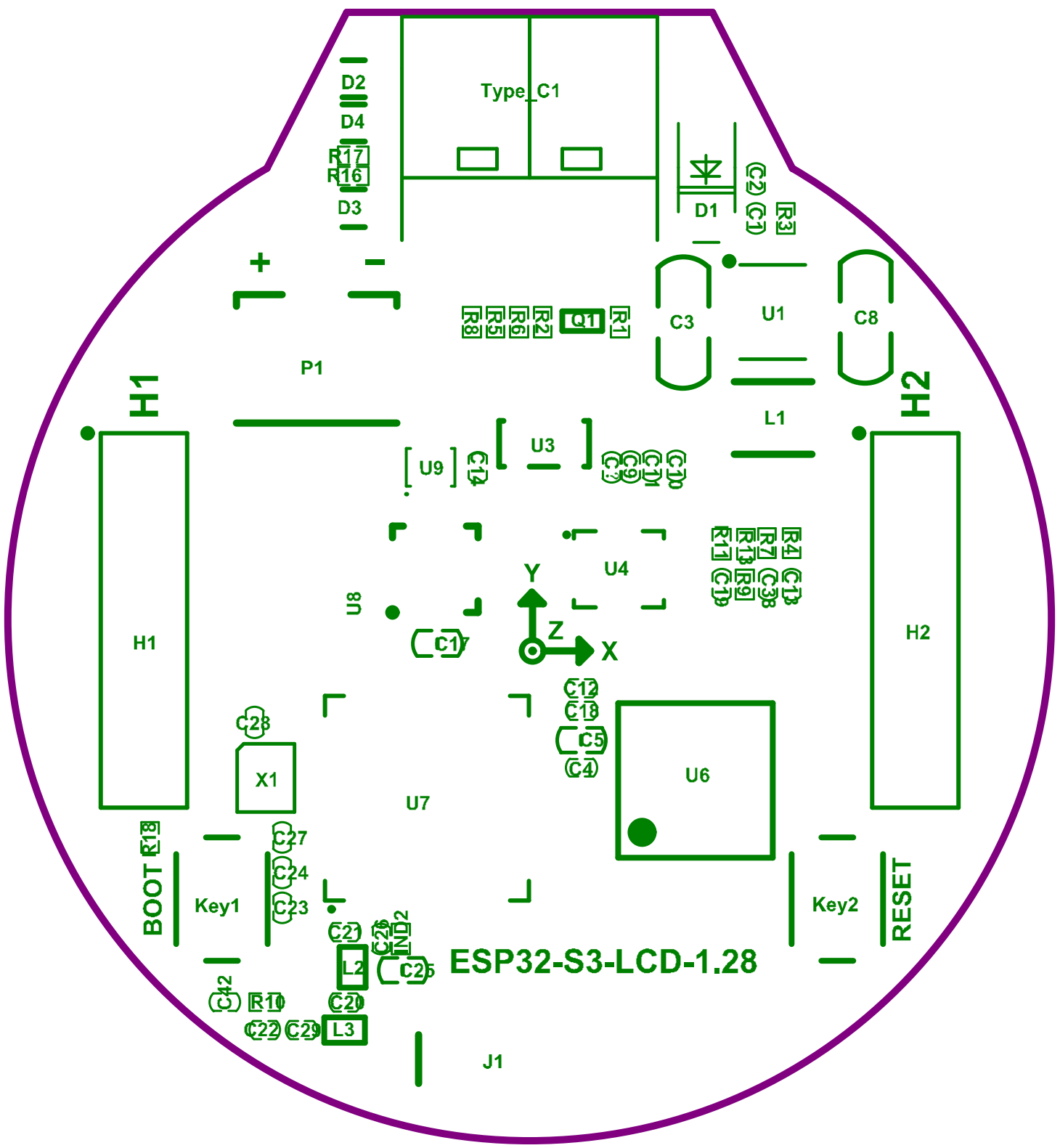
Type-C TO UART

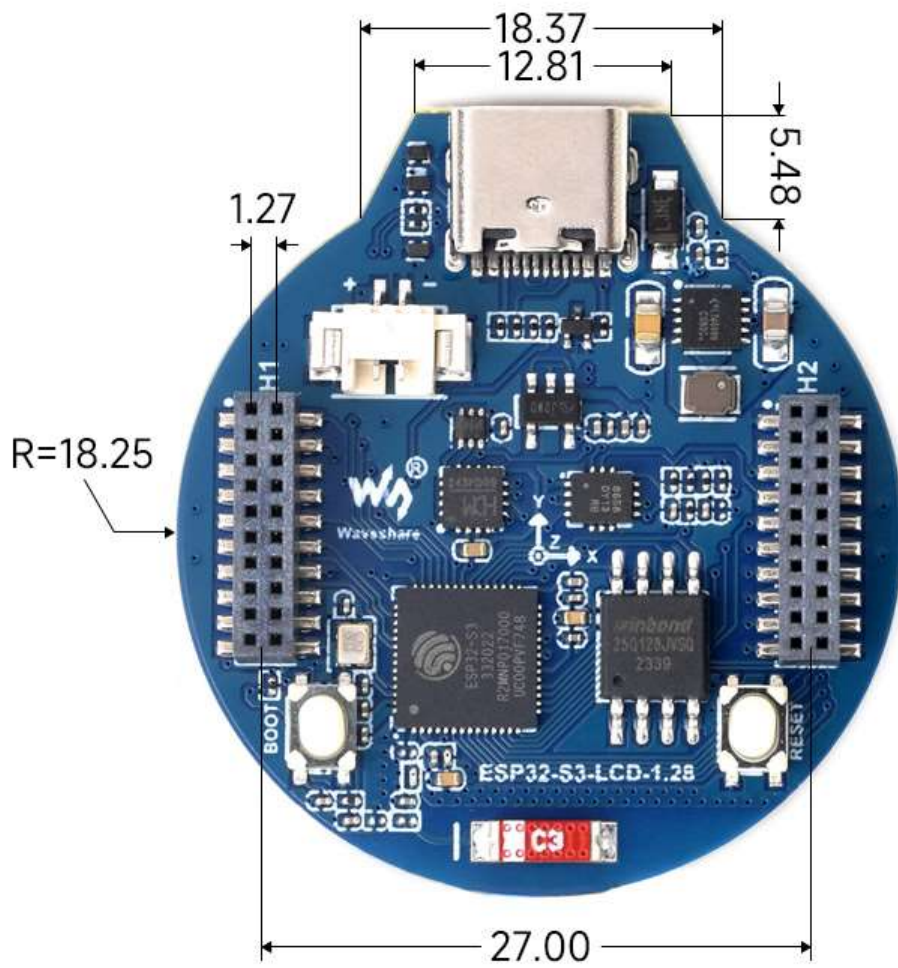
XTAL



W

avushare
ESP32-S3-LCD-1.28





Unit:mm