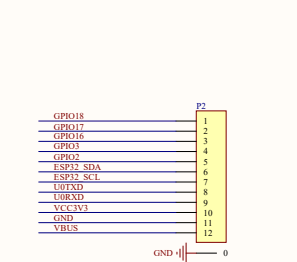
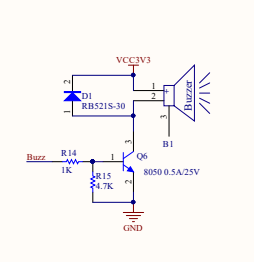
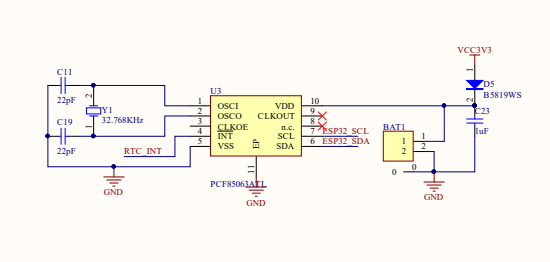
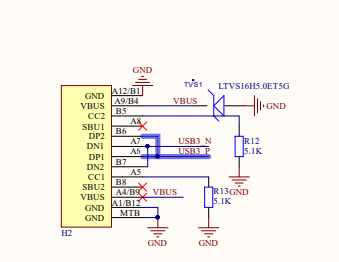
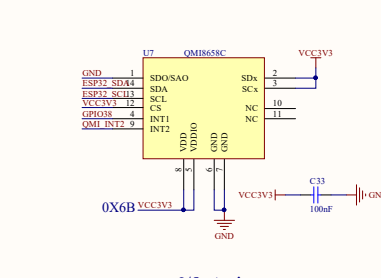
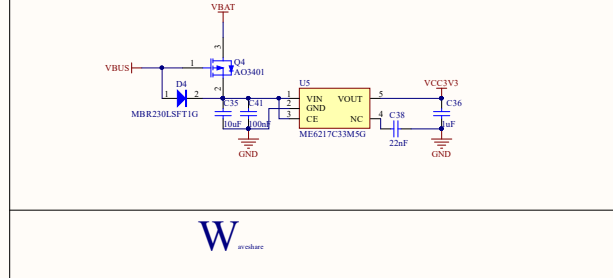
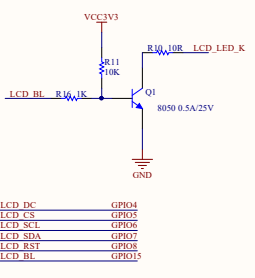
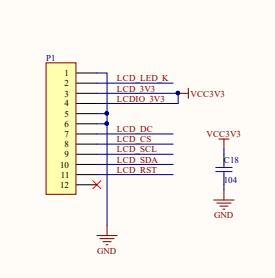


ESP32-S3	LCD	USB	UART	RTC	SHTC3	Buzzer	QMI8658C	SYS	OUT
GPIO1								BAT_ADC	GPIO2
GPIO2									GPIO3
GPIO3									GPIO4
GPIO4	LCD DC								GPIO5
GPIO5	LCD CS								GPIO6
GPIO6	LCD SCL								GPIO7
GPIO7	LCD SDA								GPIO8
GPIO8	LCD RST								GPIO9
GPIO9	TP_SCL			RTC_SCL	SHT_SCL		ESP32_SCL		ESP32_SCL
GPIO10	TP_SDA			RTC_SDA	SHT_SDA		ESP32_SDA		ESP32_SDA
GPIO11	TP_RST								GPIO12
GPIO12	TP_RST								GPIO13
GPIO13	TP_RST								GPIO14
GPIO14	TP_INT								GPIO15
GPIO15	LCD_BL								GPIO16
GPIO16									GPIO17
GPIO17									GPIO18
GPIO18		USB_N							GPIO19
GPIO19		USB_P							GPIO20
GPIO20									GPIO21
GPIO21									GPIO22
GPIO22									GPIO23
GPIO23									GPIO24
GPIO24									GPIO25
GPIO25									GPIO26
GPIO26									GPIO27
GPIO27									GPIO28
GPIO28									GPIO29
GPIO29									GPIO30
GPIO30									GPIO31
GPIO31									GPIO32
GPIO32									GPIO33
GPIO33									GPIO34
GPIO34									GPIO35
GPIO35									GPIO36
GPIO36									GPIO37
GPIO37									GPIO38
GPIO38									GPIO39
GPIO39									GPIO40
GPIO40									GPIO41
GPIO41									GPIO42
GPIO42									GPIO43
GPIO43									GPIO44
GPIO44									GPIO45
GPIO45									GPIO46
GPIO46									GPIO47
GPIO47									GPIO48
GPIO48									GPIO49
GPIO49									GPIO50
GPIO50									GPIO51
GPIO51									GPIO52
GPIO52									GPIO53
GPIO53									GPIO54
GPIO54									GPIO55
GPIO55									GPIO56
GPIO56									GPIO57
GPIO57									GPIO58
GPIO58									GPIO59
GPIO59									GPIO60
GPIO60									GPIO61
GPIO61									GPIO62
GPIO62									GPIO63
GPIO63									GPIO64
GPIO64									GPIO65
GPIO65									GPIO66
GPIO66									GPIO67
GPIO67									GPIO68
GPIO68									GPIO69
GPIO69									GPIO70
GPIO70									GPIO71
GPIO71									GPIO72
GPIO72									GPIO73
GPIO73									GPIO74
GPIO74									GPIO75
GPIO75									GPIO76
GPIO76									GPIO77
GPIO77									GPIO78
GPIO78									GPIO79
GPIO79									GPIO80
GPIO80									GPIO81
GPIO81									GPIO82
GPIO82									GPIO83
GPIO83									GPIO84
GPIO84									GPIO85
GPIO85									GPIO86
GPIO86									GPIO87
GPIO87									GPIO88
GPIO88									GPIO89
GPIO89									GPIO90
GPIO90									GPIO91
GPIO91									GPIO92
GPIO92									GPIO93
GPIO93									GPIO94
GPIO94									GPIO95
GPIO95									GPIO96
GPIO96									GPIO97
GPIO97									GPIO98
GPIO98									GPIO99
GPIO99									GPIO100



RTC

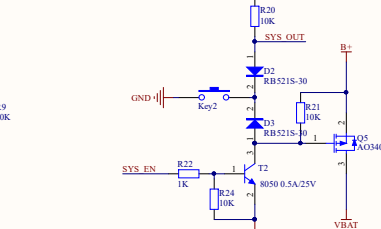
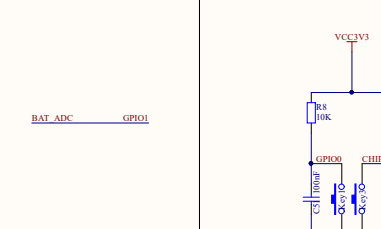
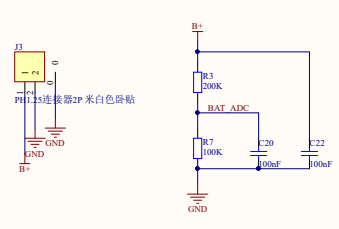
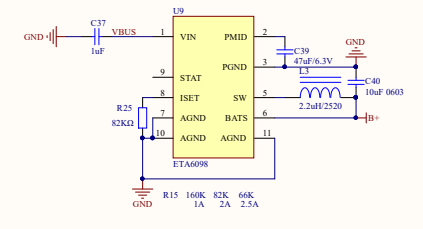
Buzzer



LCD

ESP32-S3-LCD-1.69 V2

6/9-Axis



POWER Supply

KEYS

SYS_OUT
SYS_EN