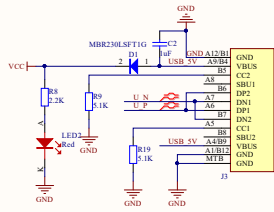


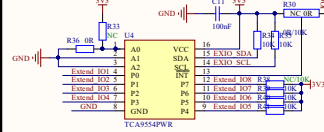
### Type-C Interface



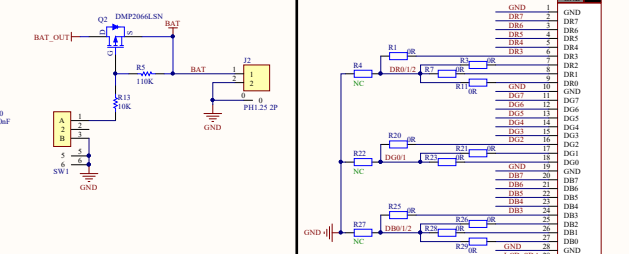
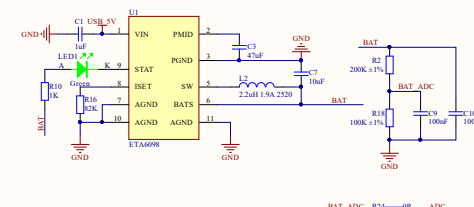
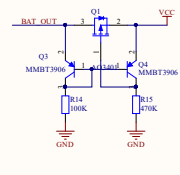
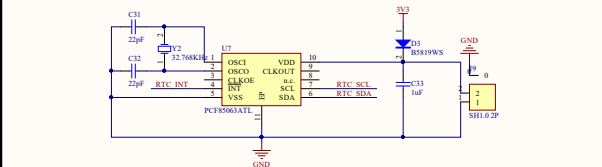
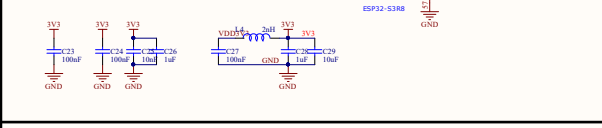
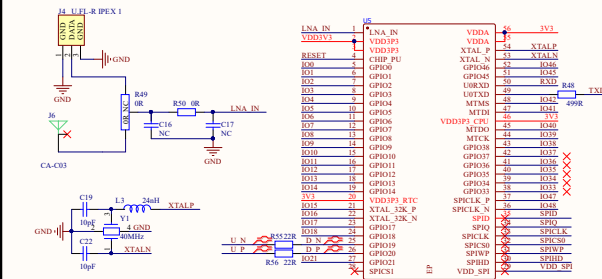
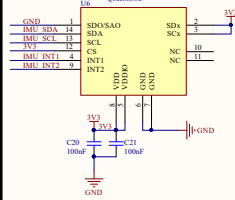
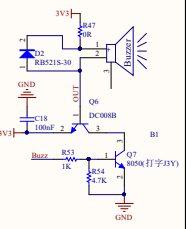
### Mechanical



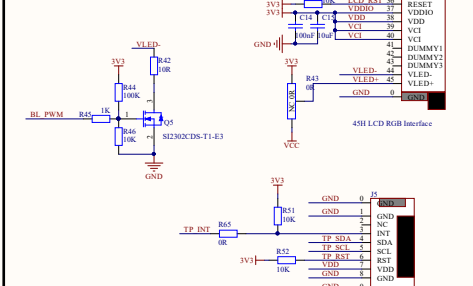
### IO Extension



### Buzzer



### Backlight



GPIO	LCD	SD Card	IMU	RTC	UART	EXIO	IC2	Other	External
IO0								GPIO0	GPIO0
IO1	LCD_SDA	SD_MOSI							
IO2	LCD_SCK	SD_SCLK							
IO3	DR4								
IO4								ADC	GPIO4
IO5	DB1								
IO6	BL_PWM								
IO7	TP_SCL		IMU_SCL	RTC_SCL		EXRO_SCL	SCL		GPIO7
IO8	DR5								
IO9	DG7								
IO10	DG6								
IO11	DG5								
IO12	DG4								
IO13	DG3								
IO14	DG2								
IO15	TP_SDA		IMU_SDA	RTC_SDA		EXRO_SDA	SDA		GPIO15
IO16	TP_INT								GPIO16
IO17	DR7								
IO18	DR6								
IO19								D.N	GPIO19
IO20								D.P	GPIO20
IO21	DR7								
IO22	DR7								
IO23								Internal occupancy	GPIO33
IO24								Internal occupancy	GPIO34
IO25								Internal occupancy	GPIO35
IO26								Internal occupancy	GPIO36
IO27								Internal occupancy	GPIO37
IO28	HSYNC								
IO29	VSYNC								
IO30	DE								
IO31	PCLK								
IO32		SD_MISO							
IO33					UART_TXD			IO34	GPIO34
IO34					UART_RXD			IO34	GPIO44
IO35									
IO36	DR3								
IO37	DR6								
IO38	DR5								
IO39	Extnd_R01	LCD_RST							
IO40	Extnd_R02	TP_RST							
IO41	Extnd_R03	LCD_CS							
IO42	Extnd_R04	SD_CS							
IO43	Extnd_R05							IMU_INT1	
IO44	Extnd_R06							IMU_INT2	
IO45	Extnd_R07							RTC_SCL	
IO46	Extnd_R08							RTC_SDA	
IO47									Buzz

W number  
ESP32-S3-LCD-2.8B