

Quectel Windows USB Driver(Q) ECM Installation Guide

LTE-A/LTE Standard/Automotive Module Series

Version: 1.0

Date: 2024-04-26

Status: Released



At Quectel, our aim is to provide timely and comprehensive services to our customers. If you require any assistance, please contact our headquarters:

Quectel Wireless Solutions Co., Ltd.

Building 5, Shanghai Business Park Phase III (Area B), No.1016 Tianlin Road, Minhang District, Shanghai 200233, China

Tel: +86 21 5108 6236

Email: info@quectel.com

Or our local offices. For more information, please visit:

<http://www.quectel.com/support/sales.htm>.

For technical support, or to report documentation errors, please visit:

<http://www.quectel.com/support/technical.htm>.

Or email us at: support@quectel.com.

Legal Notices

We offer information as a service to you. The provided information is based on your requirements and we make every effort to ensure its quality. You agree that you are responsible for using independent analysis and evaluation in designing intended products, and we provide reference designs for illustrative purposes only. Before using any hardware, software or service guided by this document, please read this notice carefully. Even though we employ commercially reasonable efforts to provide the best possible experience, you hereby acknowledge and agree that this document and related services hereunder are provided to you on an “as available” basis. We may revise or restate this document from time to time at our sole discretion without any prior notice to you.

Use and Disclosure Restrictions

License Agreements

Documents and information provided by us shall be kept confidential, unless specific permission is granted. They shall not be accessed or used for any purpose except as expressly provided herein.

Copyright

Our and third-party products hereunder may contain copyrighted material. Such copyrighted material shall not be copied, reproduced, distributed, merged, published, translated, or modified without prior written consent. We and the third party have exclusive rights over copyrighted material. No license shall be granted or conveyed under any patents, copyrights, trademarks, or service mark rights. To avoid ambiguities, purchasing in any form cannot be deemed as granting a license other than the normal non-exclusive, royalty-free license to use the material. We reserve the right to take legal action for noncompliance with abovementioned requirements, unauthorized use, or other illegal or malicious use of the material.

Trademarks

Except as otherwise set forth herein, nothing in this document shall be construed as conferring any rights to use any trademark, trade name or name, abbreviation, or counterfeit product thereof owned by Quectel or any third party in advertising, publicity, or other aspects.

Third-Party Rights

This document may refer to hardware, software and/or documentation owned by one or more third parties ("third-party materials"). Use of such third-party materials shall be governed by all restrictions and obligations applicable thereto.

We make no warranty or representation, either express or implied, regarding the third-party materials, including but not limited to any implied or statutory, warranties of merchantability or fitness for a particular purpose, quiet enjoyment, system integration, information accuracy, and non-infringement of any third-party intellectual property rights with regard to the licensed technology or use thereof. Nothing herein constitutes a representation or warranty by us to either develop, enhance, modify, distribute, market, sell, offer for sale, or otherwise maintain production of any our products or any other hardware, software, device, tool, information, or product. We moreover disclaim any and all warranties arising from the course of dealing or usage of trade.

Privacy Policy

To implement module functionality, certain device data are uploaded to Quectel's or third-party's servers, including carriers, chipset suppliers or customer-designated servers. Quectel, strictly abiding by the relevant laws and regulations, shall retain, use, disclose or otherwise process relevant data for the purpose of performing the service only or as permitted by applicable laws. Before data interaction with third parties, please be informed of their privacy and data security policy.

Disclaimer

- a) We acknowledge no liability for any injury or damage arising from the reliance upon the information.
- b) We shall bear no liability resulting from any inaccuracies or omissions, or from the use of the information contained herein.
- c) While we have made every effort to ensure that the functions and features under development are free from errors, it is possible that they could contain errors, inaccuracies, and omissions. Unless otherwise provided by valid agreement, we make no warranties of any kind, either implied or express, and exclude all liability for any loss or damage suffered in connection with the use of features and functions under development, to the maximum extent permitted by law, regardless of whether such loss or damage may have been foreseeable.
- d) We are not responsible for the accessibility, safety, accuracy, availability, legality, or completeness of information, advertising, commercial offers, products, services, and materials on third-party websites and third-party resources.

Copyright © Quectel Wireless Solutions Co., Ltd. 2024. All rights reserved.

About the Document

Revision History

Version	Date	Author	Description
-	2024-03-08	Sun XIA	Creation of the document
1.0	2024-04-26	Sun XIA	First official release

Contents

About the Document	3
Contents	4
Table Index	5
Figure Index	6
1 Introduction	7
1.1. Applicable Modules	7
2 Install USB ECM Driver	8
2.1. Preparation	8
2.2. Installation Procedure	9
2.3. Check Installation Result	12
2.4. Test Driver Operation	13
3 Uninstall USB ECM Driver	14
3.1. Uninstallation Procedure	14
3.2. Check Uninstallation Result	17
4 Appendix References	18

Table Index

Table 1: Applicable Modules	7
Table 2: Related Document	18
Table 3: Terms and Abbreviations	18

Figure Index

Figure 1: “Device Manager” Interface of Windows System Without Installed Quectel Drivers	8
Figure 2: Prepare to Install	9
Figure 3: Default Destination Location	10
Figure 4: Change Destination Location	10
Figure 5: Copy Files	11
Figure 6: Automatic Installation	11
Figure 7: Complete Installation.....	12
Figure 8: “Device Manager” Interface with Successfully Installed Driver.....	12
Figure 9: Test Module via QCOM	13
Figure 10: Uninstall USB ECM Driver.....	14
Figure 11: Prepare to Uninstall	15
Figure 12: Confirm Uninstallation	15
Figure 13: Automatic Uninstallation.....	16
Figure 14: Remove Installation Files	16
Figure 15: Complete Uninstallation	17
Figure 16: Check USB ECM Driver Uninstallation Result.....	17

1 Introduction

Quectel provides a USB ECM driver installation package (*Quectel_Windows_USB_Driver(Q)_ECM*), which supports Windows 8.1, 10 and 11 operating systems. This document explains how to install and uninstall the USB ECM driver for Quectel modules on Windows operating systems by using Windows 10 system as an example.

1.1. Applicable Modules

Table 1: Applicable Modules

Product Line	Module
LTE-A	EG06 Series, EG060K Series, EG065K Series, EG12 Series, EG120K Series, EG18 Series, EG512R-EA, EM06 Series, EM060K Series, EM061K-GL, EM12-G, EM120K-GL, EM120R-GL, EM121R-GL, EM160R-GL, EP06 Series
LTE Standard	AG35-CEN, AG35-CNN, EC20-CE, EC21 Series, EC25 Series, EG21-G, EG21-GL, EG25-G, EG25-GL, EG91 Series, EG95 Series, EG800Q Series, EG915Q Series, EG916Q-GL, EM05 Series
Automotive	AG35 Series, AG520R Series, AG521R Series, AG525R-GL, AG529R Series

2 Install USB ECM Driver

This chapter describes how to install a USB ECM driver for Quectel modules with the provided installation package.

2.1. Preparation

Complete the following preparatory steps before installation.

Step 1: Obtain the latest installation package from Quectel Technical Support.

Step 2: Connect the device or EVB equipped with the module to the PC through a USB cable.

Step 3: Power on the module.

If you have never installed a Quectel driver on your system before, you will receive a prompt to update the drivers for the unknown device. Ignore the prompt and install the USB ECM driver according to the procedure outlined in **Chapter 2.2**.

The figure below shows the “Device Manager” interface of the Windows system without Quectel drivers.

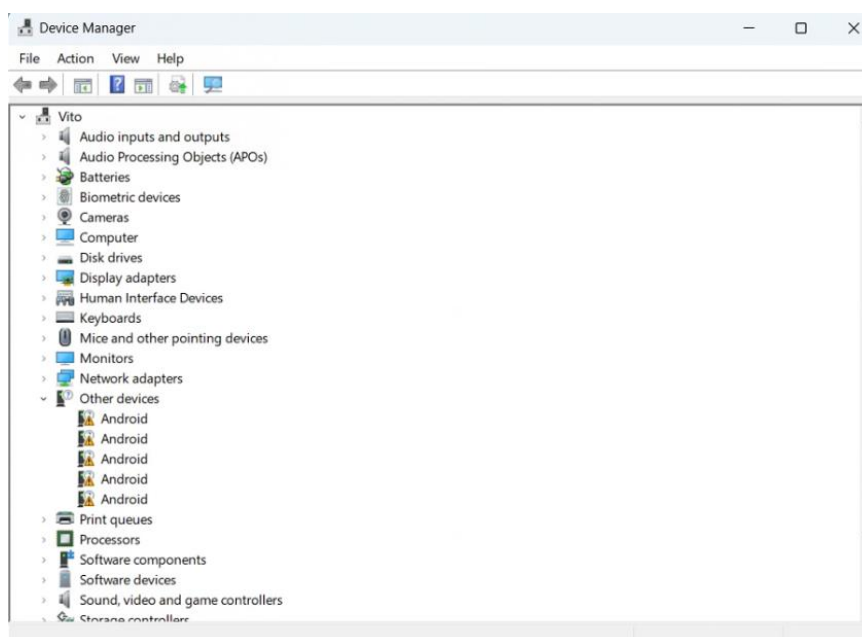


Figure 1: “Device Manager” Interface of Windows System Without Installed Quectel Drivers

2.2. Installation Procedure

This chapter explains the USB ECM driver installation procedure in detail using the *Quectel_Windows_USB_Driver(Q)_ECM_V1.0* as an example.

Step 1: Prepare to Install

Double click the *setup.exe* program in the installation package to enter the “Preparing to Install” interface.

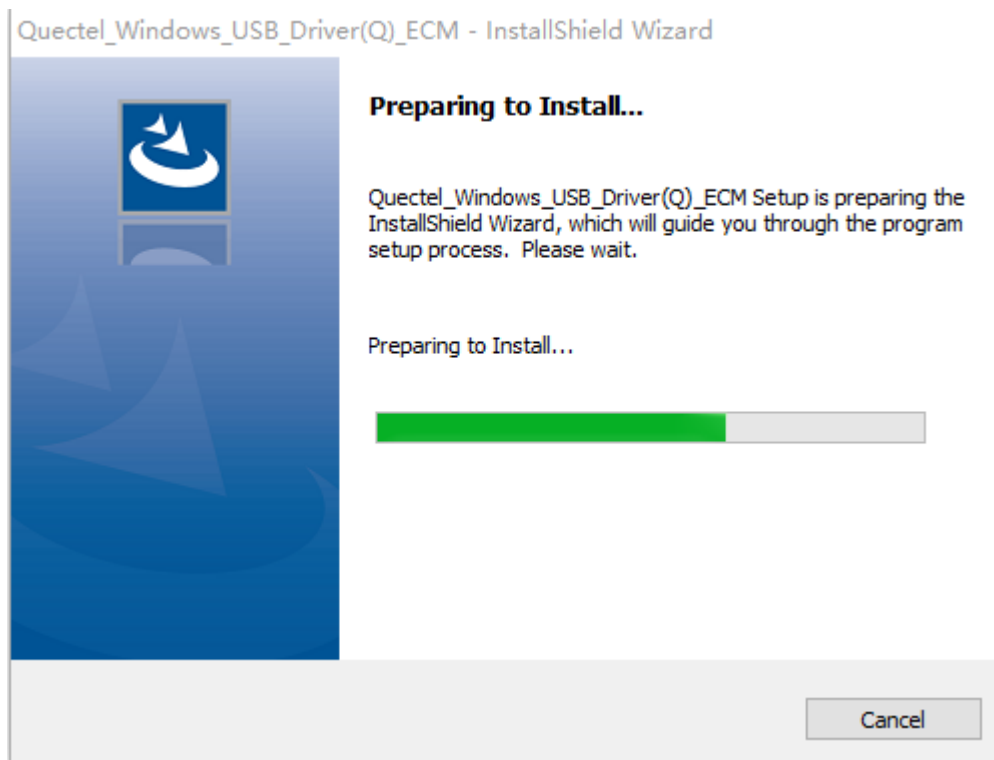


Figure 2: Prepare to Install

Once the InstallShield Wizard is ready, the “Choose Destination Location” interface pops up.

Step 2: Choose Destination Location

If you do not want to change the default location for USB ECM driver installation, simply click “**Next >**” to proceed with the installation.

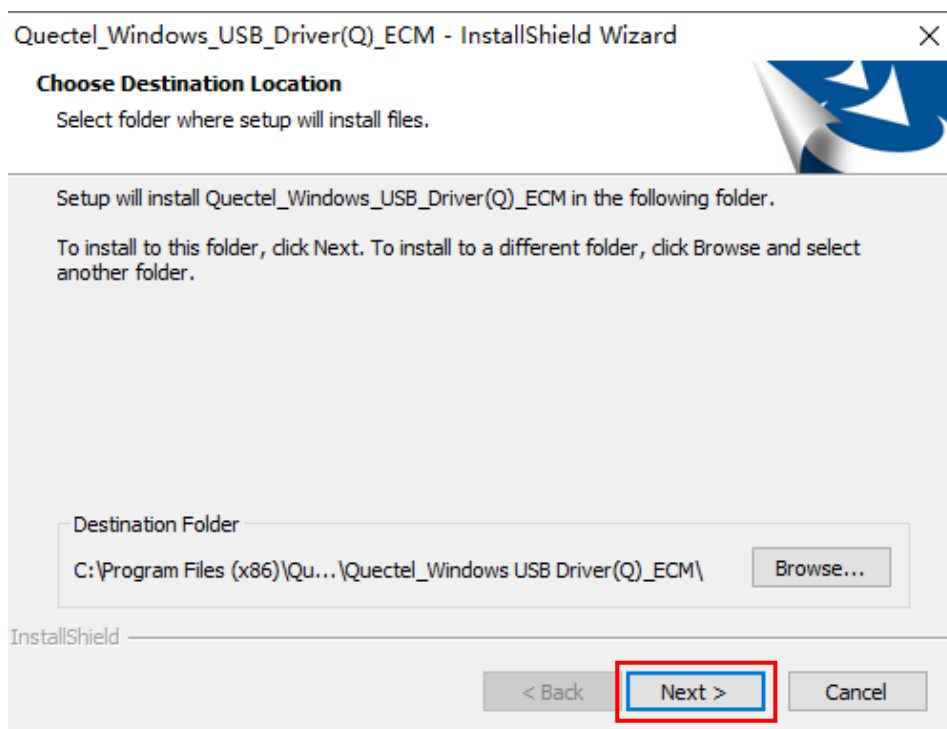


Figure 3: Default Destination Location

If you want to change the location for USB ECM driver installation, click **“Browse...”** to enter the “Choose Folder” interface. You can select the destination location and then click **“OK”** to save the configuration. The interface returns to the “Choose Destination Location” screen and you can click **“Next >”** to continue the installation.

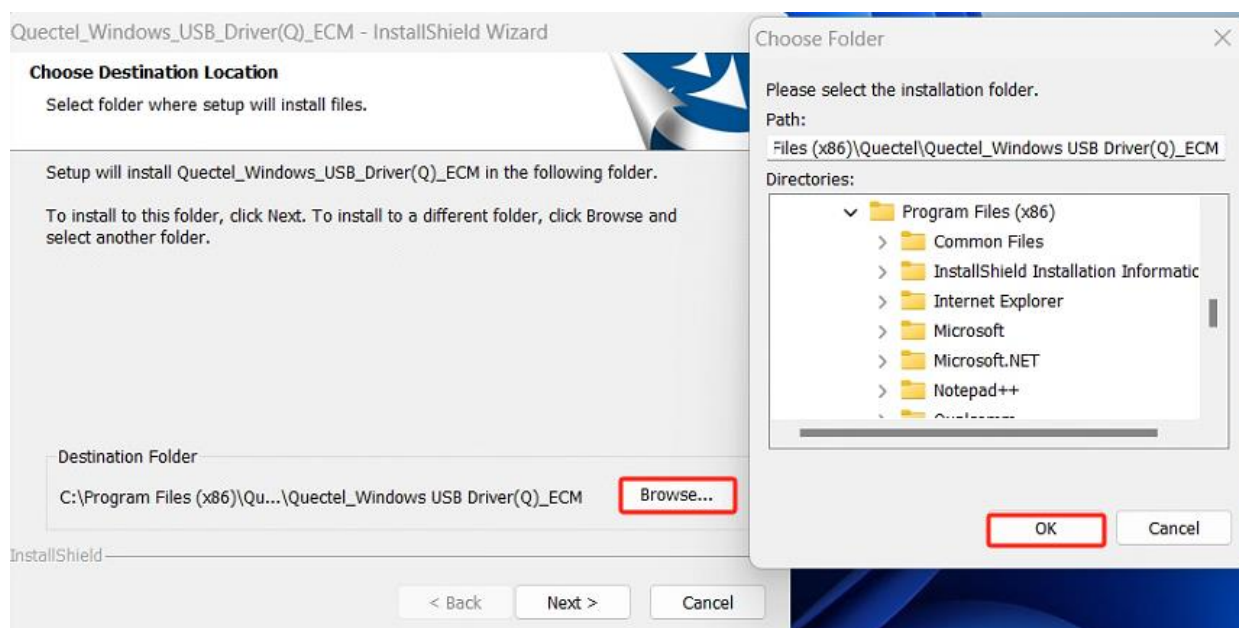


Figure 4: Change Destination Location

Step 3: Copy Driver Files Required for Installation

When the following interface is displayed, click “**Next >**” to begin copying files.

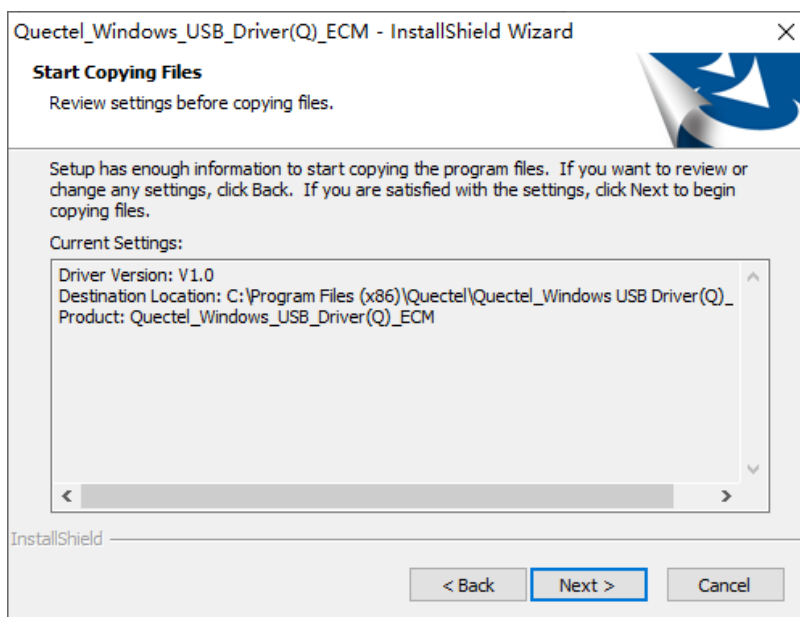


Figure 5: Copy Files

Step 4: Automatic Installation

Driver installation automatically starts after file copying is completed. Since USB ECM driver installation may take some time, please wait patiently for the process to complete.

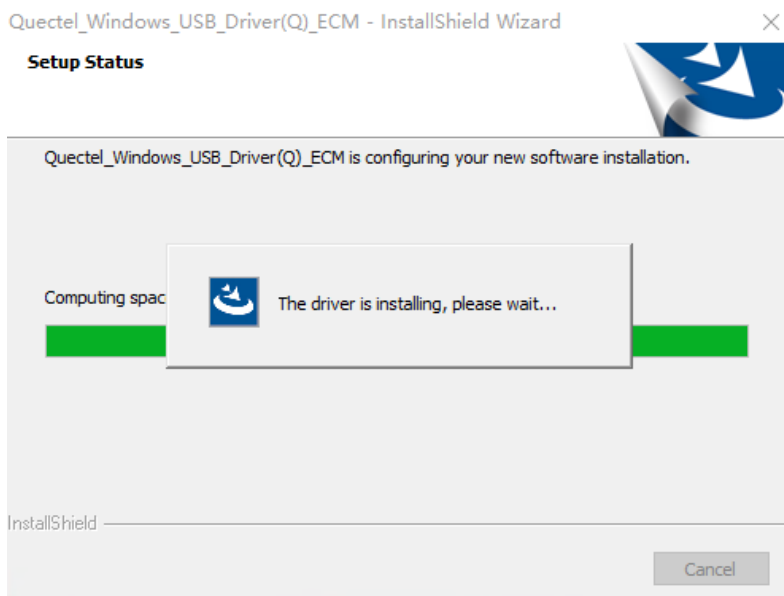


Figure 6: Automatic Installation

Step 5: Complete Installation

When the following interface is displayed, it indicates a successful driver installation. Click **“Finish”** to complete the installation.

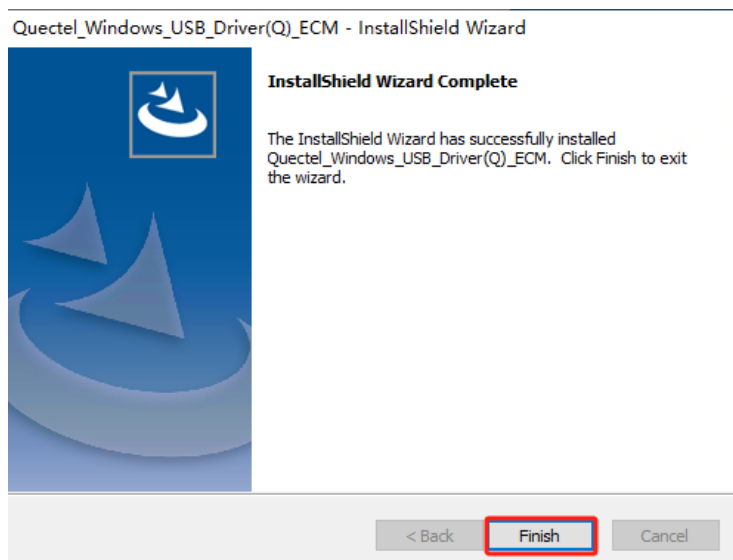


Figure 7: Complete Installation

2.3. Check Installation Result

Once the USB ECM driver is successfully installed, you can check the installation result through “Device Manager” in “Computer Management”. The “Device Manager” interface is displayed as shown below.

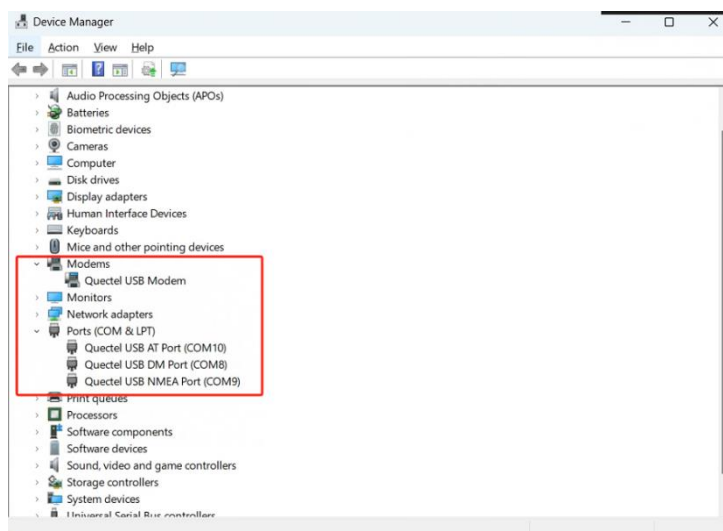


Figure 8: “Device Manager” Interface with Successfully Installed Driver

2.4. Test Driver Operation

After installing the USB ECM driver, you can test whether the driver works normally via QCOM tool. For detailed steps, see **document [1]**. Contact Quectel Technical Support for details on QCOM.

COM Port:
Baudrate:
StopBits:
Parity:

ByteSize:
Flow Control:

```

[2024-03-11_15:03:48:678]
[2024-03-11_15:03:48:678]Quectel
[2024-03-11_15:03:48:678]EC25
[2024-03-11_15:03:48:678]Revision: EC25EFAR06A13M4G
[2024-03-11_15:03:48:678]OK

```

[2024-03-11_15:03:37:495] Open COM Port Success

Clear Information

☒ DTR
☒ RTS
☐ View File
☒ Show Time

☐ HEX String
☐ Show In HEX
☒ Send With Enter

Input String:

Figure 9: Test Module via QCOM

3 Uninstall USB ECM Driver

The USB ECM driver can be uninstalled via either of the following methods:

Method 1: Rerunning the driver installation package. Double click the *setup.exe* program in the installation package to enter the “Preparing to Install” interface. Then in the pop-up “Repair or remove the program” interface, select the “Remove” option to proceed with the uninstallation as guided.

Method 2: Using the “Uninstall or change a program” in the “Control Panel”.

Method 2 is explained in this chapter.

3.1. Uninstallation Procedure

Below is the detailed procedure for uninstalling the USB ECM driver from your system.

Step 1: Choose Driver

Enter “Uninstall a program” in “Control Panel”, choose the installed USB ECM driver, and then click “Uninstall”, as shown below.

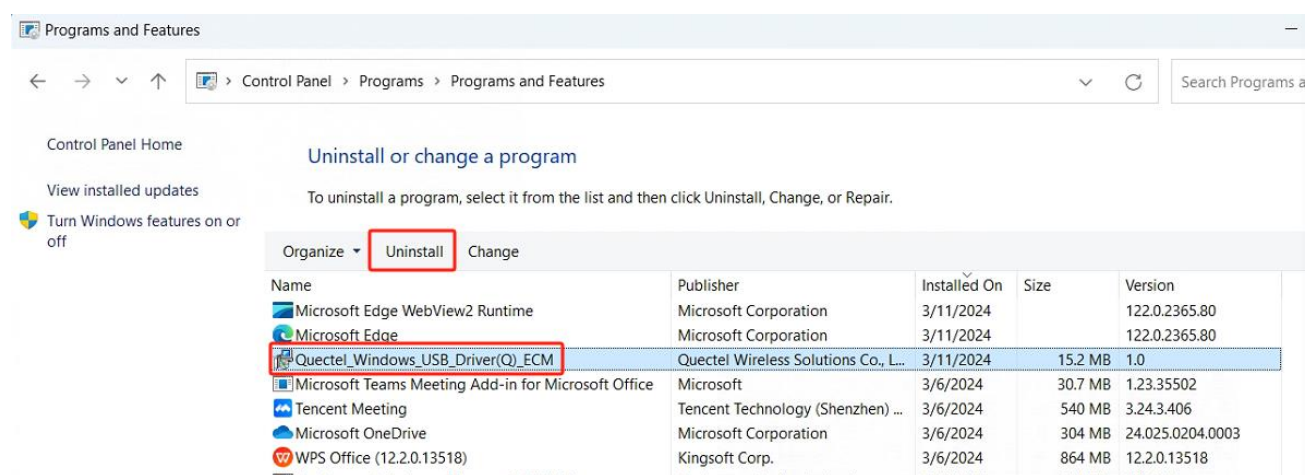


Figure 10: Uninstall USB ECM Driver

Step 2: Prepare to Uninstall

Once you select the driver for uninstallation, the system verifies the uninstallation settings, as shown in the following figure.

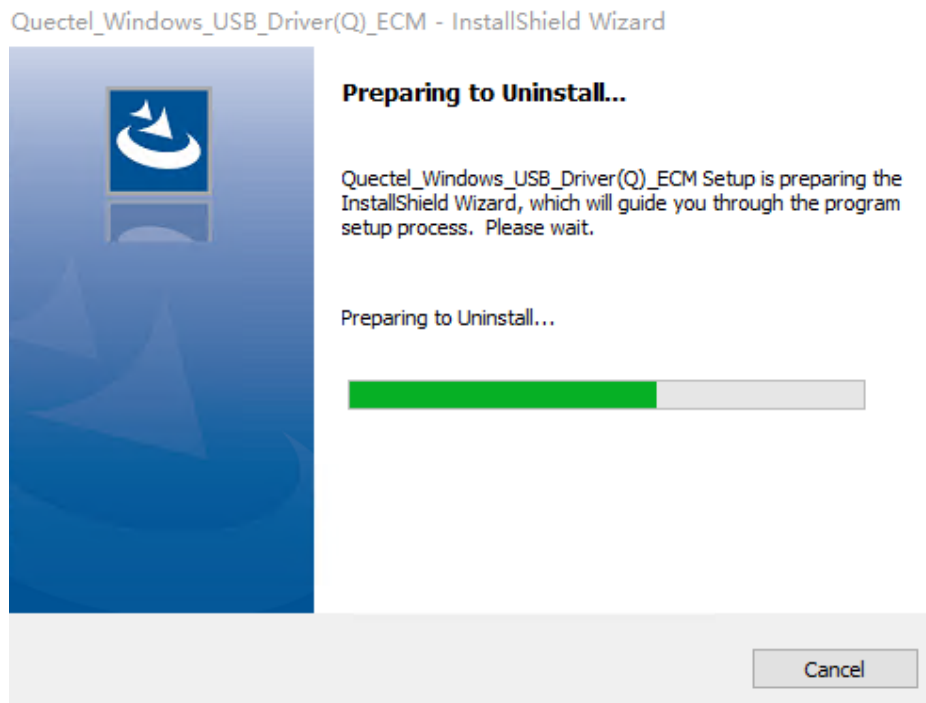


Figure 11: Prepare to Uninstall

Step 3: Confirm Uninstallation

In the pop-up dialogue box as shown below, click **"Yes"** to confirm the uninstallation.

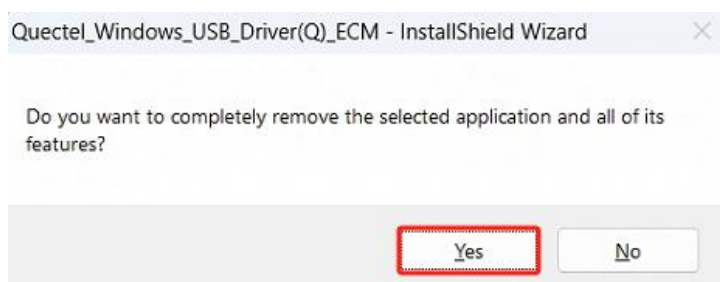


Figure 12: Confirm Uninstallation

Step 4: Automatic Uninstallation

Driver uninstallation automatically starts after you confirm the uninstallation.

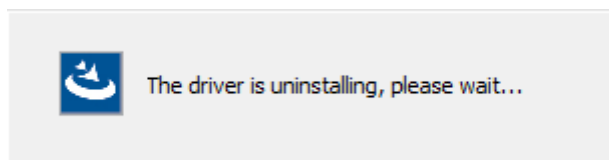


Figure 13: Automatic Uninstallation

The interface below indicates that InstallShield Wizard is removing installation files. It may take some time to uninstall the driver. Please wait patiently for the process to complete.

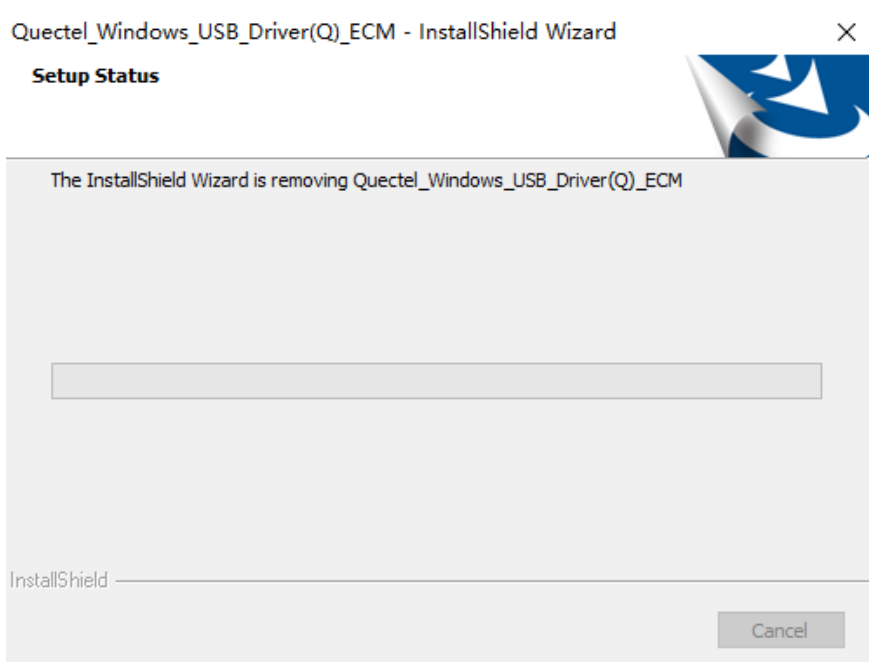


Figure 14: Remove Installation Files

Step 5: Complete Uninstallation

When the following interface is displayed, it indicates the driver has been uninstalled successfully. Click **“Finish”** to complete uninstallation.

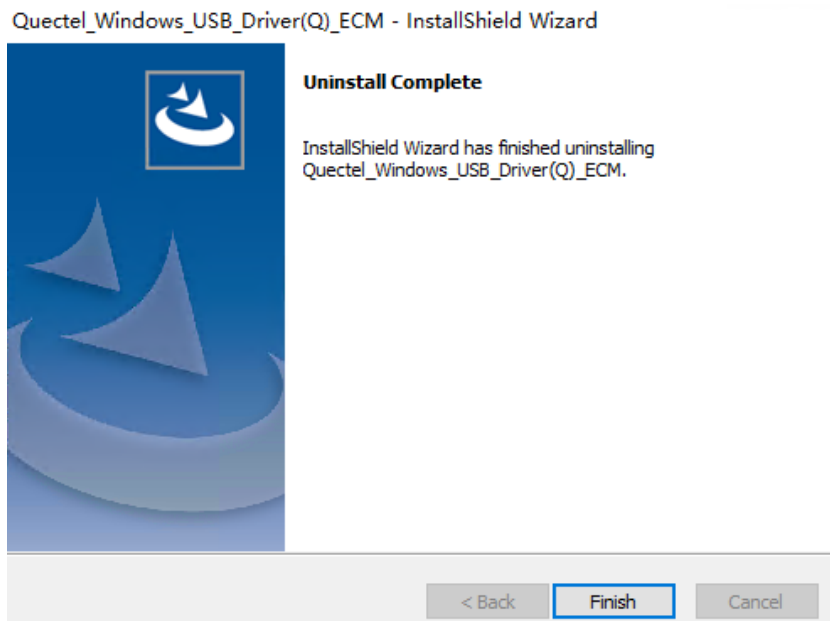


Figure 15: Complete Uninstallation

3.2. Check Uninstallation Result

Once the USB ECM driver is uninstalled successfully, the device switches to uninstalled status. To check uninstallation result, go to “Device Manager” in “Computer Management”. After a successful driver uninstallation, the “Device Manager” interface is displayed as illustrated below.

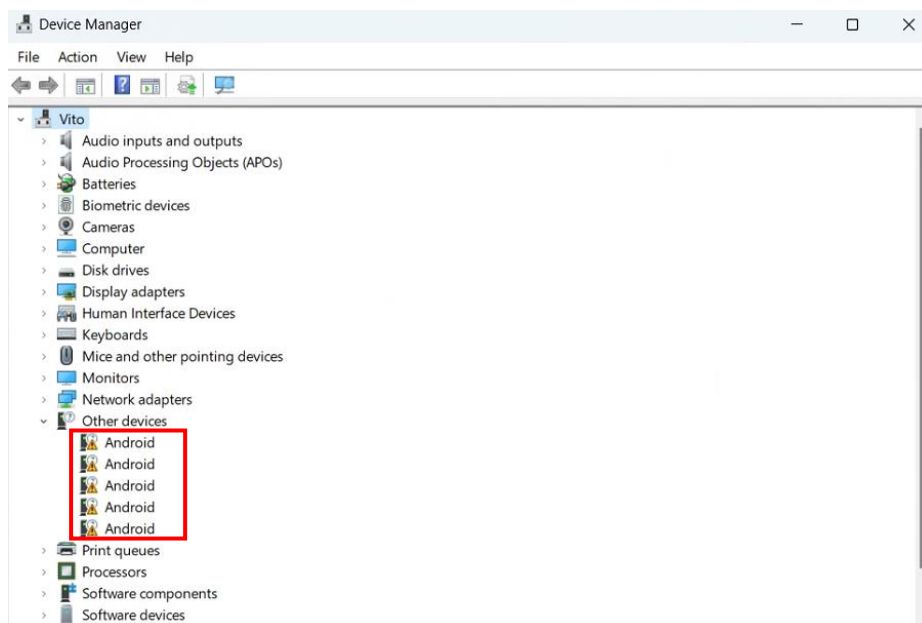


Figure 16: Check USB ECM Driver Uninstallation Result

4 Appendix References

Table 2: Related Document

Document Name
[1] Quectel_QCOM_User_Guide

Table 3: Terms and Abbreviations

Abbreviation	Description
ECM	Ethernet Control Model
LTE	Long Term Evolution
PC	Personal Computer
USB	Universal Serial Bus