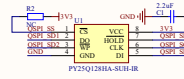
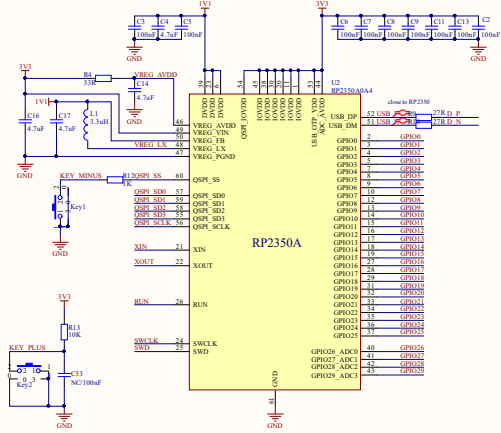
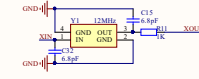


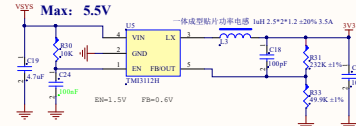
RP2350A



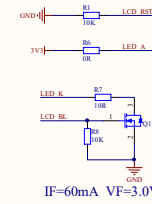
FLASH



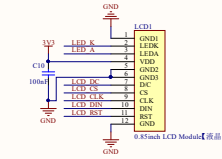
XTAL



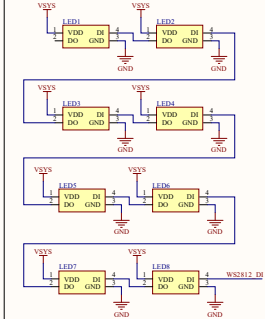
Power



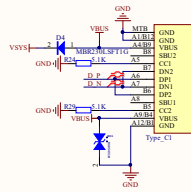
IF=60mA VF=3.0V



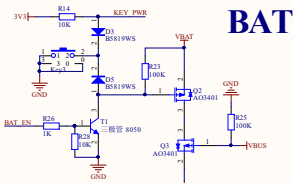
LCD



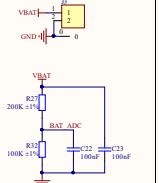
RGB



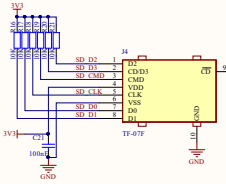
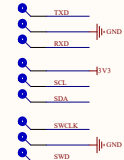
Type-C



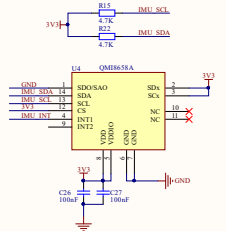
BAT



INTERFACE

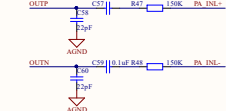
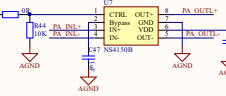
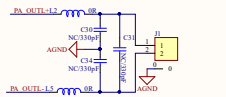
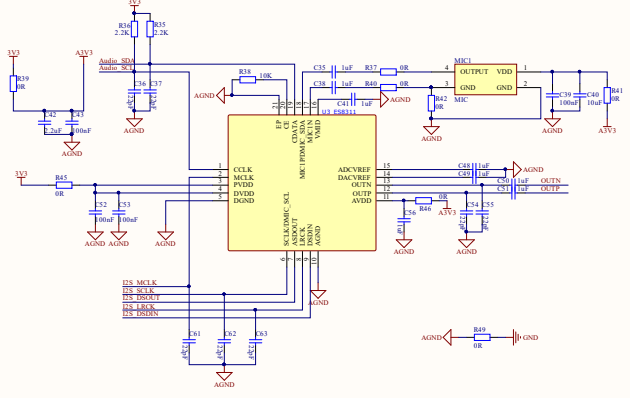


SD_Card



IMU

Codec&SPEAKER



GPIO	LCD	IMU	Codec	SD CARD	Other
GPIO0			NS_MODE		
GPIO1			I2S_DSOUT		
GPIO2			I2S_DSOUT		
GPIO3			I2S_MCLK		
GPIO4			I2S_SCLK		
GPIO5			I2S_LRCK		
GPIO6		IMU_SDA	Audio_SDA		SDA
GPIO7		IMU_SCL	Audio_SCL		SCL
GPIO8		IMU_INT	Audio_INT		
GPIO9	LCD_CS				
GPIO10	LCD_CLK				
GPIO11	LCD_DIN				
GPIO12	LCD_DQ				
GPIO13	LCD_RST				
GPIO14	LCD_RST				
GPIO15	WS2812_DI				
GPIO16					
GPIO17					BAT_STAT
GPIO18				SD_CLK	
GPIO19				SD_CMD	
GPIO20				SD_D0	
GPIO21				SD_D1	
GPIO22				SD_D2	
GPIO23				SD_D3	
GPIO24					KEY_PWR
GPIO25					KEY_PLUS
GPIO26					TXD
GPIO27					RXD
GPIO28					BAT_IN
GPIO29					BAT_ADC